

DESIGN PARAMETERS

- COMPLY WITH ELECTRICAL DESIGN PARAMETERS (ALSO RELEVANT NBS CLAUSES)
- COMPLY WITH INFORMATION AS INDICATED ON THIS DRAWING ALONG WITH ANY OTHER RELEVANT CONTRACT DRAWINGS RELATING TO ELECTRICAL, MECHANICAL OR BUILDING WORKS.
- COMPLY WITH RELEVANT BRITISH STANDARDS AND CODES OF PRACTICE, IN PARTICULAR:-
- THE BUILDING REGULATIONS
- THE 17th EDITION OF THE IEE WIRING REGULATIONS BS7671
- EMERGENCY LIGHTING STANDARDS BS5266
- ELECTRICITY AT WORK ACT
- HEALTH AND SAFETY AT WORK ACT
- CDM REGULATIONS

1 WIRING
 - WIRING SHALL BE CARRIED OUT USING PRYSMAN FP200 CABLE

2 INSTALLATION

- THE CONTRACTOR SHALL CONCEAL WIRING WITHIN THE BUILDING FABRIC TO FORM A FLUSH INSTALLATION WHEREVER POSSIBLE. SURFACE INSTALLATION WILL BE PERMITTED ON EXPOSED TIMBER JOISTS. PROPRIETY CLIPS MUST BE USED (DO NOT USE TOWER TYPE CLIPS)
- THE CONTRACTOR SHALL INSTALL CABLES STRICTLY IN ACCORDANCE WITH BS7671 ENSURING MINIMUM DEPTH FOR CABLES WITH NON METALLIC SHEATHS OR WITHOUT OTHER FORMS OF PROTECTION.
- CABLES SHALL FOLLOW A COMMON ROUTE WHEREVER POSSIBLE - ACCESSORIES SHALL BE COMPLETE WITH THE APPROPRIATE BACK BOXES.

3 SUPPLY/DISTRIBUTION

- THE BUILDING REQUIRES A 230 VOLT SINGLE PHASE ELECTRICAL SUPPLY VIA THE UTILITIES COMPANY (NEDL). THE SERVICE WILL ENTER THE BUILDING VIA AN UNDERGROUND DUCT (INSTALLED BY THE CONTRACTOR) IN LOCATION INDICATED ON DRAWING. INITIAL CONTACT WITH NEDL HAS BEEN MADE AND THE COST FOR THE WORKS IS INCLUDED IN THE MAIN BILL OF QUANTITIES; HOWEVER THE CONTRACTOR MUST ALLOW IN HIS COSTS FOR PLACING THE ORDER WITH NEDL AND LIAISING WITH NEDL FROM INCEPTION OF PROJECT TO COMPLETION OF THE WORKS.

4 LIGHTING

- LUMINAIRES SHALL BE INSTALLED AS INDICATED.
- LIGHTING POINTS SHALL BE TERMINATED VIA A CONDUIT BOX OR GLANDED DIRECTLY INTO THE LUMINAIRE.
- LUMINAIRES SHALL BE INSTALLED STRICTLY IN ACCORDANCE WITH MANUFACTURERS RECOMMENDATIONS.
- CIRCUIT WIRING SHALL BE 1.5mm² AND PROTECTED BY A 10 AMP RCBO 30ma
- THE CIRCUITS SHALL BE CONTROLLED BY LOCAL KEY SWITCHES AND INTEGRAL / EXTERNAL PRESENCE DETECTORS.
- EXTERNAL LUMINAIRES SHALL OPERATE AS INDICATED ON SCHEMATIC AND ACCOMPANYING NOTES.

5 SMALL POWER

- SOCKET OUTLETS SHALL BE AS INDICATED. CIRCUIT WIRING SHALL BE 2.5mm² PROTECTED BY A 32 AMP RCBO 30ma. OUTLETS SHALL BE VIA A RING FINAL CIRCUIT UNLESS OTHERWISE DETAILED.
- CONNECTION UNITS SHALL BE AS INDICATED OR AS INSTRUCTED. CIRCUIT WIRING SHALL BE 2.5mm² AND PROTECTED BY A 16 AMP RCBO 30ma OR AS DETAILED.

6 EMERGENCY LIGHTING

- ALL EMERGENCY LIGHTING IS INTEGRAL TO THE GENERAL LIGHTING LUMINAIRES. INSTALL STRICTLY IN ACCORDANCE WITH THE MANUFACTURERS LITERATURE

7 EARTHING

- THE ENTIRE INSTALLATION SHALL BE EARTHED AND BONDED IN ACCORDANCE WITH THE CURRENT EDITION OF THE IEE REGULATIONS. THE CONTRACTOR MUST CONFIRM EARTHING ARRANGEMENT WITH NEDL TO ASCERTAIN REQUIREMENTS AND PROTECTION.

8 MECHANICAL SERVICES

- THE ELECTRICAL CONTRACTOR SHALL LIAISE CLOSELY WITH THE MECHANICAL CONTRACTOR TO ENSURE ALL ELECTRICAL SUPPLIES ARE INSTALLED IN THE CORRECT LOCATIONS. THE ELECTRICAL CONTRACTOR SHALL ALLOW FOR FINAL CONNECTIONS TO EQUIPMENT VIA A SUITABLE FLEX OR DIRECT CONNECTION.
- EXTRACT FANS SHALL BE VIA THE ADJACENT LIGHTING CIRCUITS AND FUSED SWITCHED CONNECTION UNITS. PIR OPERATION WILL ALSO BE REQUIRED
- ALL EQUIPMENT WILL BE SUPPLIED AND INSTALLED BY THE MECHANICAL CONTRACTOR.

9 ELECTRIC CAR CHARGING PILLAR

- PROVIDE A SUPPLY TO THE PROPOSED ELECTRIC CAR CHARGING PILLAR VIA A 20' 10mm² XLPE/SW/LSF CABLE RUN IN A TRENCH. THE APPROX CABLE LENGTH IS 15m INCLUDING EXTERNAL TRENCH. ALLOW FOR TRENCHING SUITABLE FOR AGRICULTURAL LOCATION.

10 GENERAL INFORMATION

- THE LOCATIONS OF EQUIPMENT AND ACCESSORIES ARE FOR TENDERING PURPOSES ONLY. CONFIRM EXACT LOCATIONS PRIOR TO INSTALLATION WITH ELECTRICAL INSPECTOR

| Rev. | By | Date | Description |
|------|----|----------|---|
| A | TS | SEP 2014 | OMIT: ENTRANCE LUMINAIRE AND SWITCH ADD: IP65 ENCLOSURE ADD: PIR IN ACCESSIBLE WC |

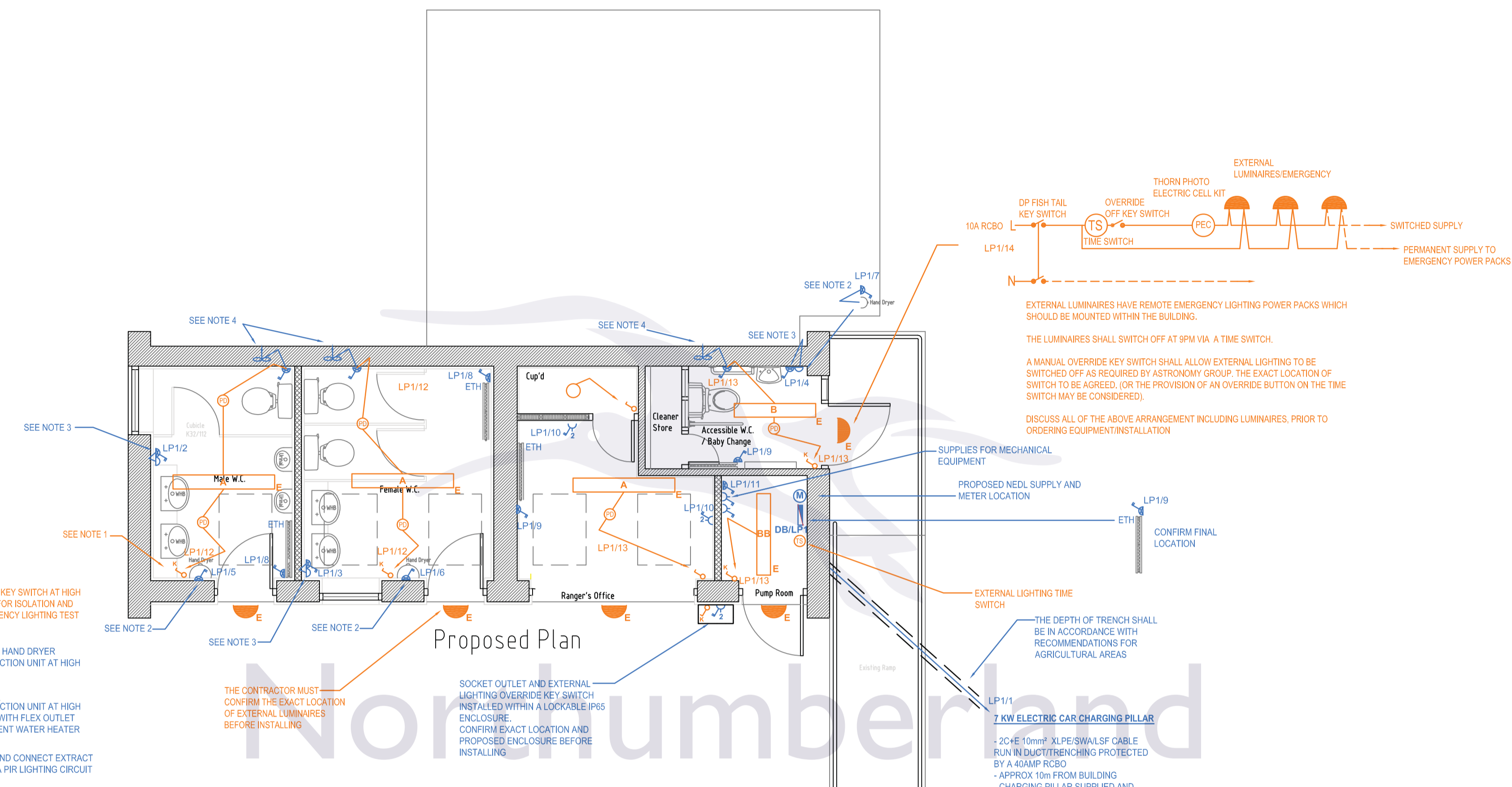
Newcastle City Council

Michael Murphy, Director of Communities, Architectural and Building Design Services, Civic Centre, Newcastle upon Tyne, NE1 8QH, Tel: 0191 278 7878 ext. 23277 Fax: 0191 2783436 Email: architectural.services@newcastle.gov.uk www.newcastle.gov.uk

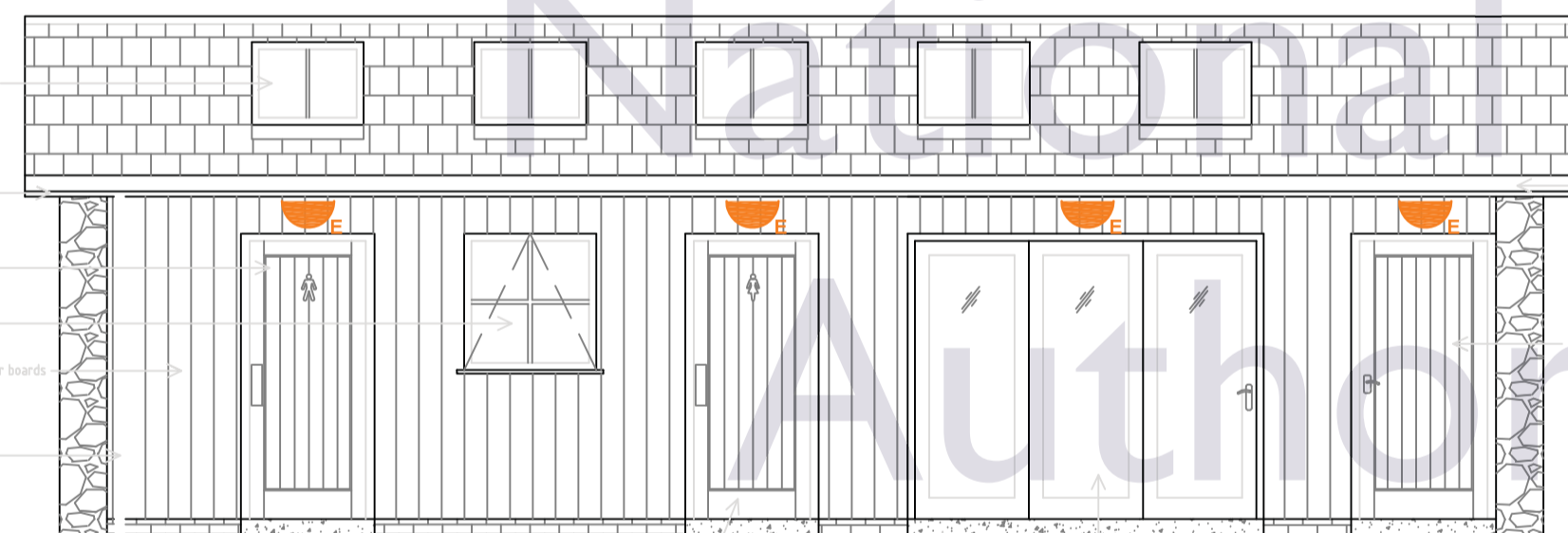
Project
BULBY'S WOOD TOILET BLOCK INGRAM

Drawing title
ELECTRICAL INSTALLATION POWER and LIGHTING

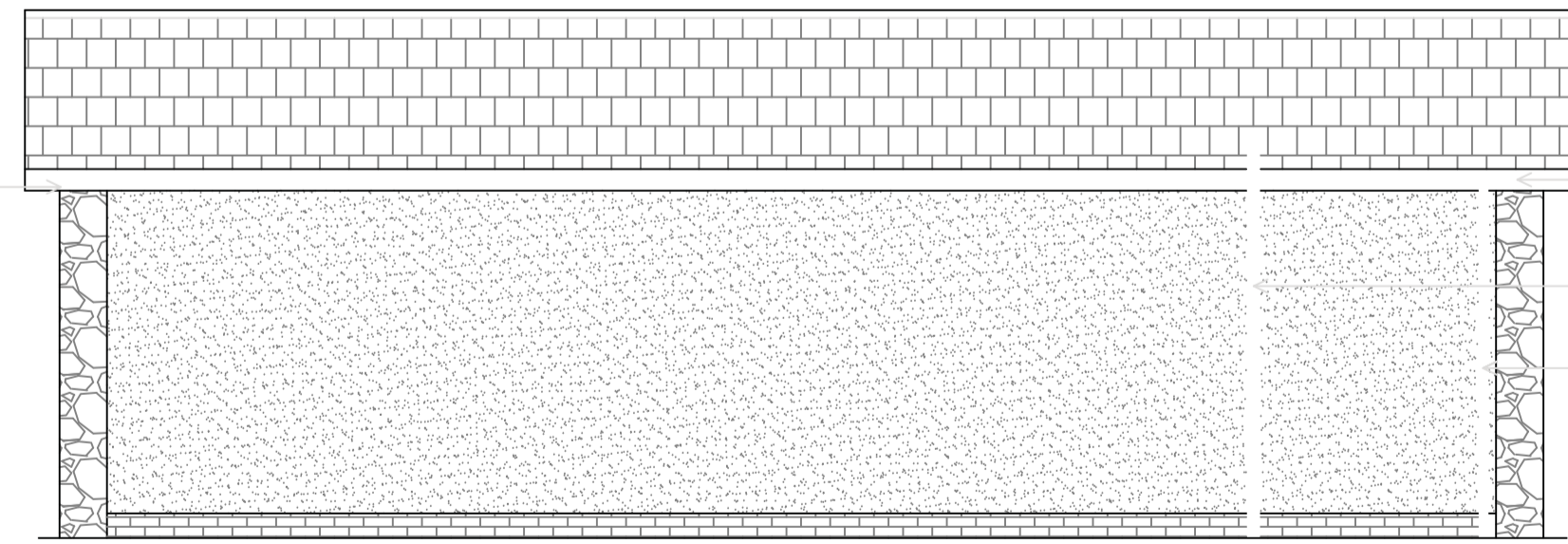
| | | | |
|-----------------|-----------------------|------|----------|
| Drawn by | TS | Date | MAY 2014 |
| Path & Filename | G:\MondE\C\G5043\ELEC | | |
| Layout | | | |
| Scales | 1:50 @ A1 | | |
| Job Number | G5043 | | |
| Drawing Number | G5043/F/01 | | Revision |
| | | | A |



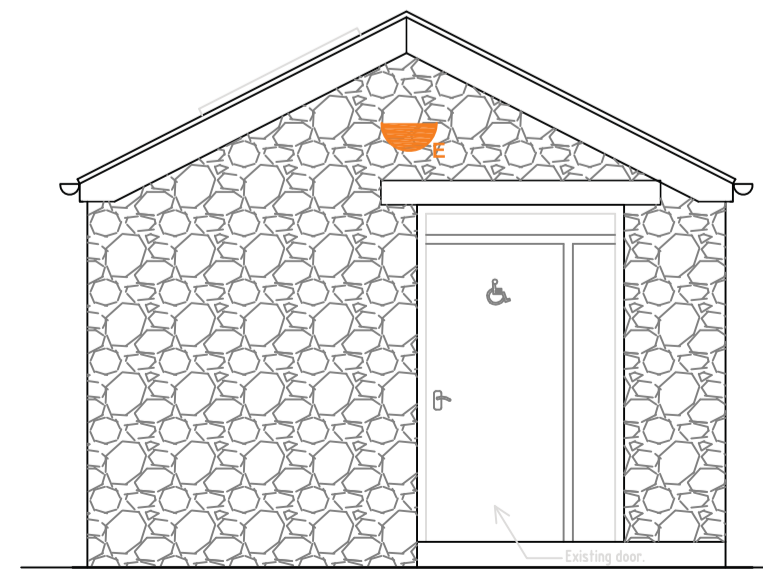
- NOTE 1**
MOUNT KEY SWITCH AT HIGH LEVEL FOR ISOLATION AND EMERGENCY LIGHTING TEST
- NOTE 2**
MOUNT HAND DRYER CONNECTION UNIT AT HIGH LEVEL
- NOTE 3**
CONNECTION UNIT AT HIGH LEVEL WITH FLEX OUTLET ADJACENT WATER HEATER
- NOTE 4**
WIRE AND CONNECT EXTRACT FAN VIA PIR LIGHTING CIRCUIT



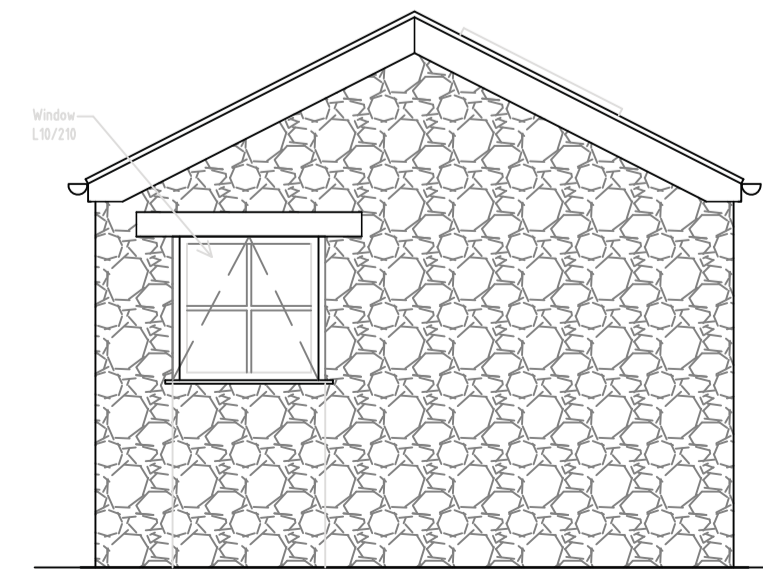
Proposed Front Elevation



Proposed Rear Elevation



Proposed Gable Elevation 1



Proposed Gable Elevation 2

LEGEND

- ONE WAY SWITCH
- KEY SWITCH (DOUBLE POLE)
- DESIGNPLAN - COVE LED LUMINAIRE - REF: D975/4/6250NWEM3
- DESIGNPLAN - COVE LED LUMINAIRE - REF: D975/4/4000NWEM3
- DESIGNPLAN - COVE LED LUMINAIRE - REF: D975/4/4000NWMSBEM3
- DESIGNPLAN - TERMINUS WALL - TMW1100WNWCC48EM3B
- TIME SWITCH
- PRESENCE DETECTOR - EX-OR LIGHTSPOT
- DISTRIBUTION BOARD - SQUARE D 24 WAY LOAD CENTRE
- FUSED SWITCHED CONNECTION UNIT
- FLEX OUTLET
- 230V TWIN SWITCHED SOCKET OUTLET
- ELECTRICAL TUBULAR HEATER (SUPPLIED AND INSTALLED BY OTHERS)

NOTE

- 'E' REPRESENTS LUMINAIRES WITH COMBINED EMERGENCY LIGHTING PACK
- ALL ACCESSORIES SHALL BE MK LOGIC - WHITE