




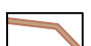


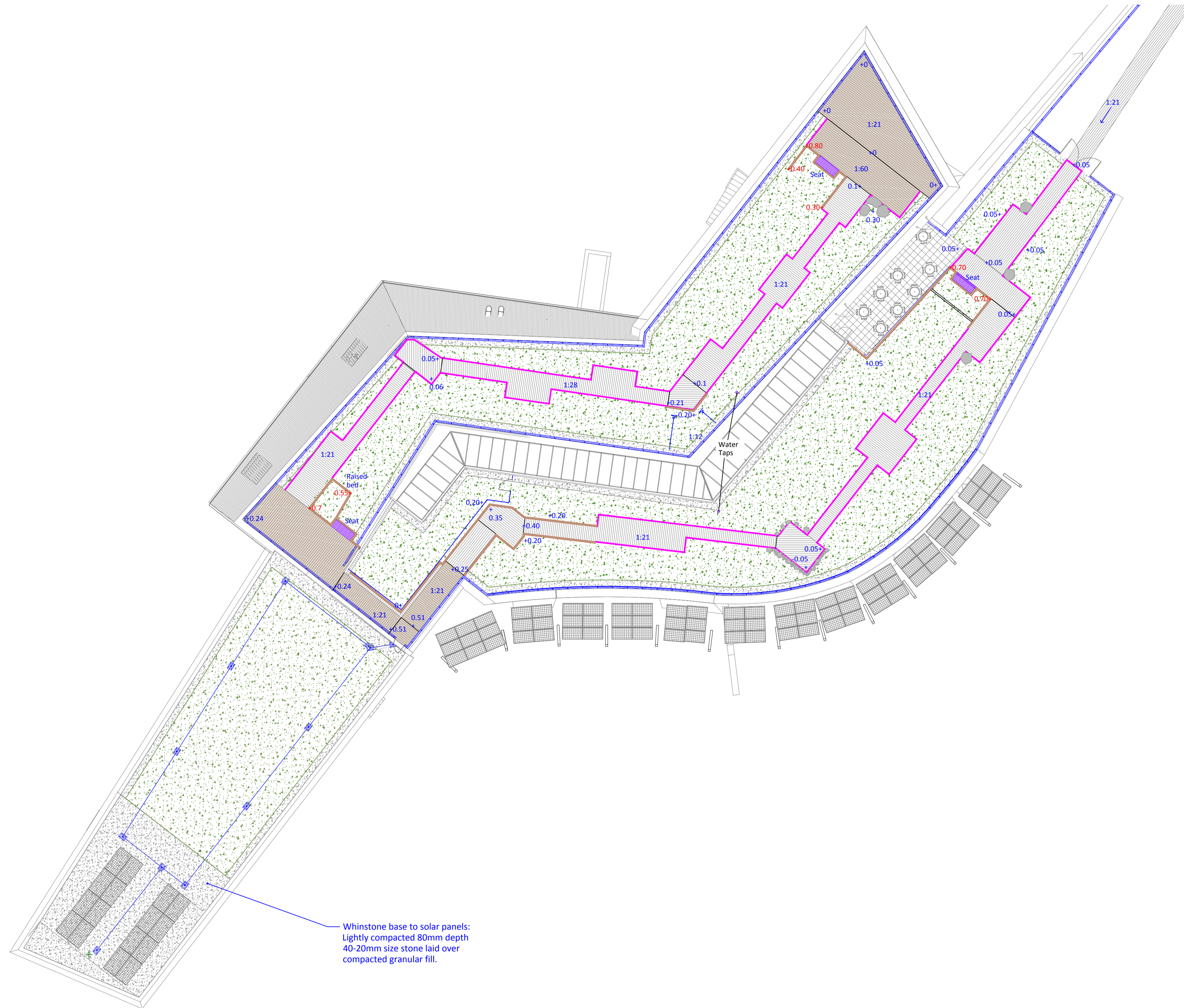




**KEY:**

-  Whin plant communities.
-  Unplanted substrate.
-  Timber decking.
-  Dura Grating, stone grey, 50mm thick with 50mm mesh, 3 x 1m or 3.6 x 1.2m panels. Supported by concrete blocks. Infilled with whinstone.
-  Charcon 'Moordale' grey textured flags (450 x 450 x 70mm).
-  Softwood 'sleeper' retaining walls / cladding.
-  Steel mesh balustrade.
-  Natural stone boulders.



Rev.	Date	description
P01	09-06-15	Initial draft.
P02	17-07-15	Second draft.
C01	05-10-15	Construction Layout.
C02	09-10-15	Taps for plant maintenance reinstated.

Client <b>NNPA / YHA</b>			
Project <b>The Sill, Once Brewed, Northumberland</b>			
Title <b>Green Roof - General Layout</b>			
Drawn	Checked	Date	Scale@A1
<b>PB/QV</b>	<b>PB</b>	<b>06/15</b>	<b>1:200</b>
Drawing No.	Status	Revision	
<b>SIL-GK-00-ZZ-DR-L-4300</b>	<b>A</b>	<b>C02</b>	

**GLENKEMP**  
 LANDSCAPE ■■■ PLANNING  
 EIA ■■■ ECOLOGY  
 Design Works, William Street, Felling on Tyne, NE10 0JP  
 Telephone: 0191 495 2495 Fax: 0191 469 2868  
 E mail: planconsult@glenkemp.co.uk