

- KEY:**
- Asphalt (See Patrick Parsons detail).
 - Tar spray & chippings for vehicle access & parking bays, See Patrick Parsons detail, colours: T1 = honey/pink, T2 = light grey tones.
 - Tar spray & chippings for pedestrian access, See Patrick Parsons detail, colours: T1 = honey/oatmeal, T2 = light grey tones.
 - Lafarge Tarmac 'Ulticolour', Buff Quartzite, pedestrian access (See Patrick Parsons detail).
 - Lafarge Tarmac 'Ulticolour', clear - natural - vehicular access (See Patrick Parsons detail).
 - Natural sandstone flags (See Patrick Parsons detail).
 - Reclaimed stone flags (See Patrick Parsons detail).
 - Whinstone setts (See Patrick Parsons detail).
 - Loose gravel over compacted sub-base, pedestrian access (See Patrick Parsons detail).
 - Compacted whinstone, vehicular access (See Patrick Parsons detail).
 - Compacted whinstone footpath (See Patrick Parsons detail).
 - Reinforced turf [plastic grid - vehicular & pedestrian] (See Patrick Parsons detail).
 - Reinforced whinstone [plastic grid] (See Patrick Parsons detail).
 - Reinforced whinstone for delivery area. [heavy duty plastic grid] (See Patrick Parsons detail).
 - Grassed walkway (150mm depth granular sub-base with 50mm topsoil mixed into top 50mm granular sub-base).

- NOTES:**
- Where 'no dig' road or footpath construction is required within tree root protection areas, Cellweb is to be used to the appropriate depth as a foundation to the specified surface finish (see SIL-GK-00-ZZ-DR-L-8415).
 - Play spaces (YHA garden and between car parks) to have bark chippings or grass mat as primary safety surface (see dwg. SIL-PP-00-ZZ-DR-C-280).
- Edging materials: (see dwgs. SIL-GK-00-ZZ-DR-L-8405 & 8506)

Rev.	Date	Description
P01	07-05-15	Initial draft
P02	21-05-15	Differentiation made between vehicular and pedestrian surfacing types
P03	27-05-15	Annotation added re 'no dig' construction.
P04	29-06-15	Colours to hard surfacing added to key, area of whinstone surface to cycle store changed to natural stone, minor layout change.
C01	23-09-15	VE changes incorporated.
C02	02-10-15	Underground services info switched off.
C03	07-10-15	Additional VE changes following design team review.
C04	23-11-15	Changes to north of Military Road incorporated
C05	07-04-16	Changes to boundary walls incorporated. No changes to hard surfacing.

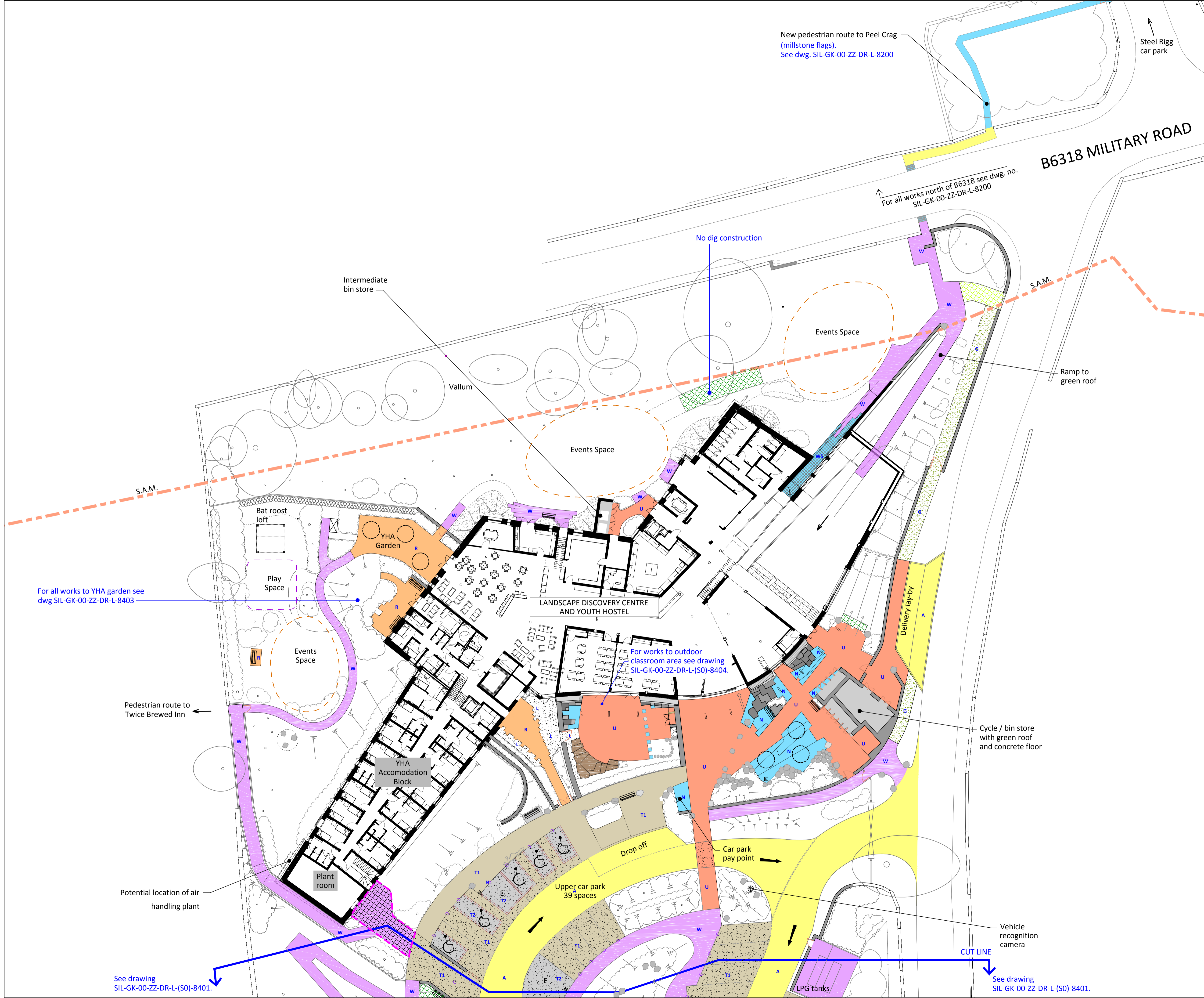
Client NNPA / YHA			
Project The Sill, Once Brewed, Northumberland			
Title Hard surfacing - North			
Drawn	Checked	Date	Scale@A1
PB/QV	PB	05/15	1:250
Drawing No.	Status	Revision	
SIL-GK-00-ZZ-DR-L-8400	A	C05	

GLENKEMP

LANDSCAPE EIA PLANNING ECOLOGY

Design Works, William Street, Felling on Tyne, NE10 0JP
Telephone: 0191 495 2495 Fax: 0191 469 2668
E mail: planconsult@glenkemp.co.uk

GK file ref.



For all works to YHA garden see dwg SIL-GK-00-ZZ-DR-L-8403

For works to outdoor classroom area see drawing SIL-GK-00-ZZ-DR-L-(S0)-8404.

Cycle / bin store with green roof and concrete floor

Vehicle recognition camera

See drawing SIL-GK-00-ZZ-DR-L-(S0)-8401.

See drawing SIL-GK-00-ZZ-DR-L-(S0)-8401.

New pedestrian route to Peel Crag (millstone flags). See dwg. SIL-GK-00-ZZ-DR-L-8200

For all works north of B6318 see dwg. no. SIL-GK-00-ZZ-DR-L-8200

No dig construction

S.A.M.

S.A.M.

Pedestrian route to Twice Brewed Inn

Potential location of air handling plant

Steel Rigg car park

B6318 MILITARY ROAD

Ramp to green roof

Delivery lay-by

Drop off

Car park pay point

Upper car park 39 spaces

LPG tanks

CUT LINE

Intermediate bin store

Vallum

Events Space

Events Space

Bat roost loft

YHA Garden

Play Space

Events Space

LANDSCAPE DISCOVERY CENTRE AND YOUTH HOSTEL

YHA Accomodation Block

Plant room