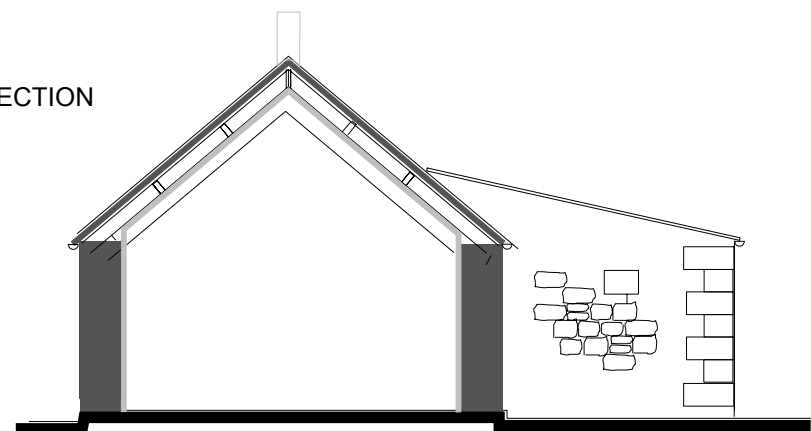
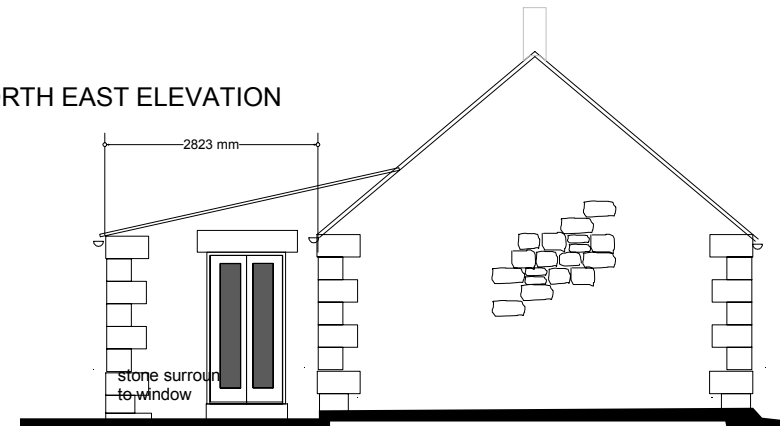


**BAT MITIGATION MEASURES**  
**CREVICE ROOST SITES**  
 WALLS 16 external crevice roost sites, 7 on the northern and southern elevation and 2 on the eastern within the stone walls and at the eaves and access retained created through careful repointing see detailed dwg. Such gaps will be from 15-20mm wide and 40-80mm long, or repointed to create such a gap by using a roll of newspaper 20mm in diameter angled upwards into the gap, applying the mortar around, and then removing the paper before the mortar is fully cured to leave a weather-proof access route for bats.  
**ROOF** A total of 5 purpose designed "bat slates" will be incorporated into the new roof. Access to the underside of the ridge tiles will be provided in 10 locations through 20mm diameter gaps in the pointing. Access between ridge tiles will be provided through gaps in the mortar joints. All voids accessible from such gaps will be only lined with type 1F bitumastic sarking

**SOUTH WEST ELEVATION/SECTION**



**NORTH EAST ELEVATION**



Revisions  
 A 19.10.2015 add Bat mitigation measures  
 12.01.2016 split Dwgs

<b>EarthSense</b> CAROLE TOWNSEND ENVIRONMENTAL CONSULTANT - ARCHITECT The Old Farmhouse, Stonehaugh, Hexham, NE48 3BU Tel & Fax 01434 230798 e mail caroletownsendis@yahoo.com			
BARNs AT STONEHAUGH SHIELDS NE48 3BU			1:100
Drawing Title PROPOSED ELEVATIONS/SECTIONS	Scale		A3
	Job No		A4
Dwg No	Stone Units DO 3		Rev No
Drawn By	Checked By	Status	Date