

6 JAN 2017

## E4312 Compact Wall Downlight - Stainless Steel - 240v GU10

The E4312 is a 240-volt compact wall light made in 316 grade stainless steel. It has a flush lens to prevent water accumulation, and a longer body to shield the lamp from view. It can accommodate a wide range of GU10 led or halogen lamps.



### PHYSICAL DATA

The E4312 is an IP65 rated compact downlight measuring 103mm x 63mm, mounted on a 77mm diameter x 25mm high base. The light stands proud from the surface by 90mm. There is sufficient distance internally between lamp holder and lens (72mm) to permit the fitting of optional glare louvre (E4010), frosted lens (MR16AFL) and a range of Dichroic clip on colour filters.

### ELECTRICAL DATA

- 240v

### COMPATIBLE LAMPS (purchase separately)

GU10COB30D 6w 550 lumen 30° warm white  
GU10COB185L 3w 60°2700k warm white  
GU10COB60D 6w 550 lumens 60° warm white  
GU10LED3.6WW 3.6w LED warm white

GU10LEDCWWN 3w LED wide beam warm white  
GU10LED3WW 3w warm white  
GU10LED5W 5w LED cool white 390 lumens  
GU10LED5WWN 5w LED 36° warm white  
Halogen lamps up to 35w

### INSTALLATION

**Must be installed by a qualified electrician.** Unscrew bezel and insert lamp. Apply small amount of grease to thread and screw bezel back on to the body of the light. Use supplied fixings to attach base plate to the wall in desired location having fed the cable through the grommet on the rear of the mounting base. The use of T9990 sealant is recommended for effective seal around the cable entry. Cable connection is made via three-pole terminal block inside the base. Secure light to the base by tightening up the three grub screws. **Using a single RCD for large numbers of 240v fittings is not recommended due to the risk of nuisance tripping. We advise the use of separate RCD protection for each circuit and a maximum of 12 fittings per RCD**

Lighting for Gardens Limited. Registered No.3678804.  
Registered Office: Lower Clough Mill, Pendle Street, Barrowford, Lancashire BB9 8PH  
VAT No 587 6855 66  
Web: [www.lightingforgardens.com](http://www.lightingforgardens.com)  
Email: [technicalsupport@lightingforgardens.com](mailto:technicalsupport@lightingforgardens.com)

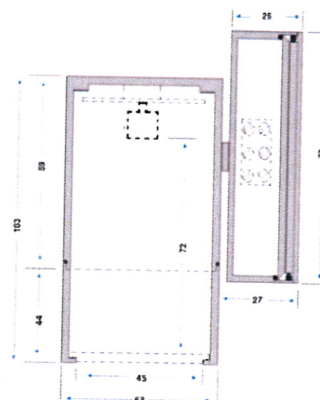
Product design & specification subject to change or modification without notice. Image for illustration only. E&OE  
Ver1.0 22/08/2016

#### COMPLIANCE & WARRANTY

- 2 year warranty
- CE / RoHS Compliant

#### COMPATIBLE ACCESSORIES

E4010	Glare Louvre	58mm Honeycomb provides glare protection
MR16AFL	Clip on frosted lens	To give a diffused light
MR16ASL	Clip on spread lens	To give a rectangular shape to the beam
MR16ABDF	Clip on filter	A vibrant blue filter can be used to add drama to water features and modern garden materials such as glass and stainless steel
MR16ACDF	Clip on filter	Champagne dichroic filter provides a mellow alternative to white light
MR16AGDF	Clip on filter	Green filter that can be used to enhance dull foliage
MR16AMDF	Clip on filter	Pale blue filter to give a moonlight effect
MR16APDF	Clip on filter	A purple filter that adds vibrant colour to dark subjects
MR16ARDF	Clip on filter	This Red filter adds a warm glow to enhance yellow and red foliage
MR16ASDF	Clip on filter	Skin tone filter gives statues a warmer skin like appearance



Lighting for Gardens Limited. Registered No.3678804.  
 Registered Office: Lower Clough Mill, Pendle Street, Barrowford, Lancashire BB9 8PH  
 VAT No 587 6855 66  
 Web: [www.lightingforgardens.com](http://www.lightingforgardens.com)  
 Email: [technicalsupport@lightingforgardens.com](mailto:technicalsupport@lightingforgardens.com)

Product design & specification subject to change or modification without notice. Image for illustration only. E&OE  
 Ver1.0 22/08/2016



**A++** **£84.90**

incl. 20 % VAT  
free shipping

some parts of the UK & foreign countries are excluded

Quantity:

Choose a light bulb ...

Add to Basket

save / compare

On orders over £50  
**Free Shipping**  
\* some parts of the UK are excluded

Contact us via E-mail  
**Send an inquiry**

Online-Shopping with SSL-Connection  
**100% Secure Shopping**

### Versatile path light Binka with motion detector

Item No.: 9647027

★★★★★

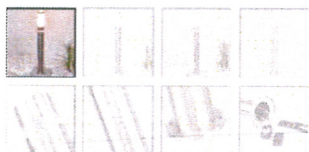
Manufacturer:  lampenwelt.com

Delivery time: 2-3 workdays

#### Features:

Suitable for LED or energy saving lamps

Light bulbs excluded



Product Description: Versatile path light Binka with motion detector

**Binka - understated path light with built-in motion detector**

Outdoor lights with a motion detector are increasingly sought after these days. The sensor proves to be very practical as it ensures that the lamp responds to the movement of an approaching person and turns on at the right moment. Thus no-one needs to make large detours to switch the light on. No, the path light turns on by itself!

Movements are detected within an angle of 90 degrees and the maximum detection range can be varied from 2 to 8 metres. The lighting duration can also be adjusted in the range between 5 seconds and 4 minutes.

Basically, the design of Binka is quite simple as the path light has a round cylindrical shape and is made of white plastic in the upper part, while the frame is made of stainless steel. As well as the E27 socket, which is intended for use with an compact fluorescent lamp, a clear ring is located on the upper part of the stainless steel frame, which is equipped with some additional LEDs.

**Energy Class:**

[Show full energy efficiency label](#)

**Technical Specifications:**

Material:	Stainless, plastic
Colour:	Stainless steel, white
Base type:	E27
Light bulb:	1 x 11 W E27 (not included) + 1 x 0.7 W LED (included)
Height:	80 cm
Diameter:	11,7 cm
Is height-adjustable:	no
Supply voltage in volts:	230
IP code:	IP44
Protection class:	I
Light bulb included:	no
Energy efficiency class:	A++

Consulting - Path Lights with Motion Sensor

Hannah Smith

Our friendly customer support is happy to help you with all your questions about lamps & lights.

+44 20 3514 3658

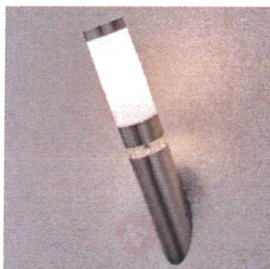
Monday to Friday  
8.00 am - 5.00 pm

**Series**



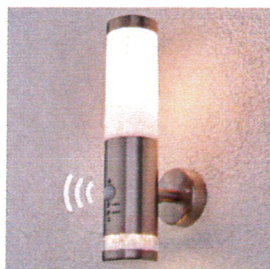
Bright outdoor wall light Binka with sensor

**A++** £67.90 ~~£45.90~~  
2-3 workdays



Stainless steel outdoor wall light Binka

**A++** £43.90 ~~£27.90~~  
2-3 workdays



Outdoor wall light Binka with sensor

**A++** £76.90 ~~£58.90~~  
2-3 workdays



Binka - outdoor wall light made of stainless steel

**A++** £52.90 ~~£31.90~~  
2-3 workdays

Stainles

Stainle



Questions

Be the first to ask a question

Reviews

★★★★★

Be the first to review this product

### Our Recommendations



Beautiful Daike stainless steel...

**A++** ~~£81.90~~ **£40.90**  
2-3 workdays



Timm - LED path light with mot...

**A+** ~~£144.90~~ **£103.90**  
2-3 workdays



LED path light Timm with motio...

**A+** ~~£162.90~~ **£108.90**  
2-3 workdays



Effective, two-light LED outdo...

**A+** ~~£63.90~~ **£54.90**  
2-3 workdays

Spheric

**A+**

>

### Your Recently Viewed Items



The contractor is to check the site for utility, overhead power lines, trees and sewer lines at connection points before commencing any work. This drawing is to be read with and checked against structural and specialist drawings provided for the work. The contractor is to comply in all respects with the current Building Regulations whether specifically stated on the drawings or not. The contractor shall be responsible for any necessary applications to the Local Planning Authority. Currie LLP and any other subcontractors shall be responsible for any necessary applications to the Local Planning Authority.

EXTENT OF SITE TO WHICH PLANNING APPLICATIONS RELATED TO THIS DRAWING ARE APPLICABLE

REV C - 01/11/2016 - DRAWING LAYOUT UPDATED  
 REV B - 01/11/2016 - MICRO BREWERY LAYOUT REVISED  
 REV A - 17/08/2016 - RESPONSE TO NEW STATE QUOTED  
 REVISIONS:

CLIENT:  
 TWICE BREWED LLP

PROJECT:  
 PROPOSED MICRO BREWERY AND RECEPTION AREA AT:  
 TWICE BREWED PUBLIC HOUSE  
 MILITARY ROAD  
 NORTHUMBERLAND  
 NE47 7AN

DRAWING TITLE:  
 SITE PLAN LAYOUT

DRAWING STATUS:  
 PLANNING

**Currie + Currie**  
 architecture

Beaufort Park, Amick Road  
 Hexham, NE46 4TU

By: 01/11/2016 10:27:31 To: 01/11/2016 10:27:31

Drawn By	Checked By	Date
CW	DC	17/08/2016
		01/11/2016
		01/11/2016

Drawing No: CC/16/TWBDBY/1004



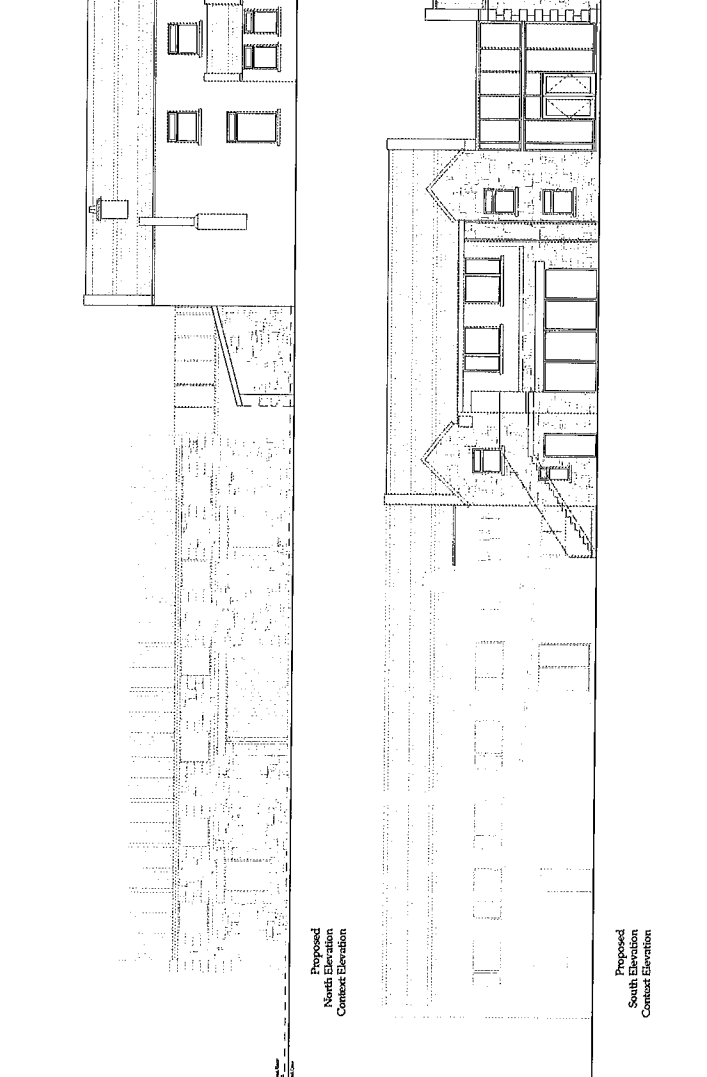
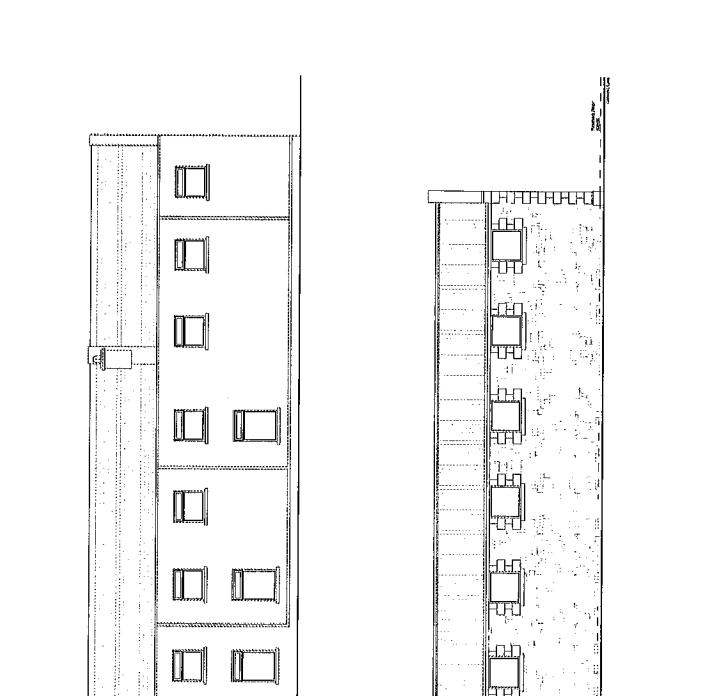
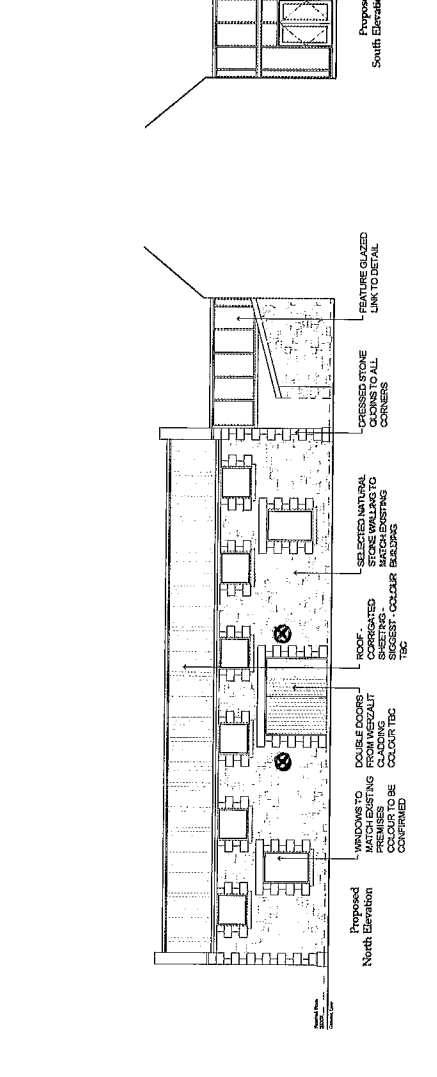
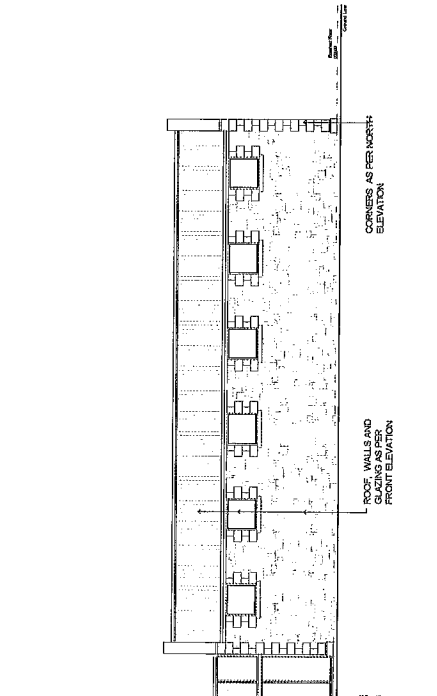
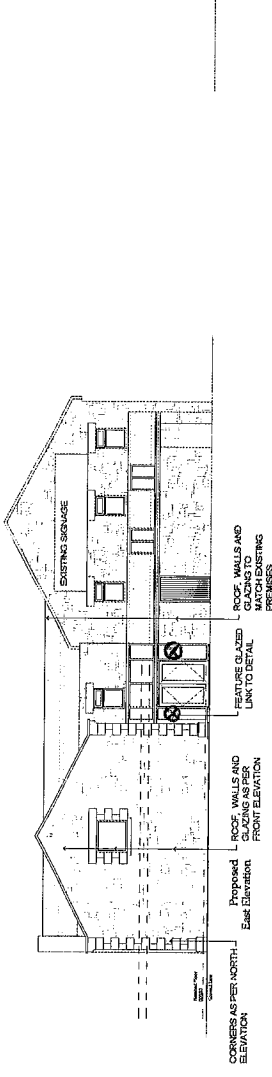
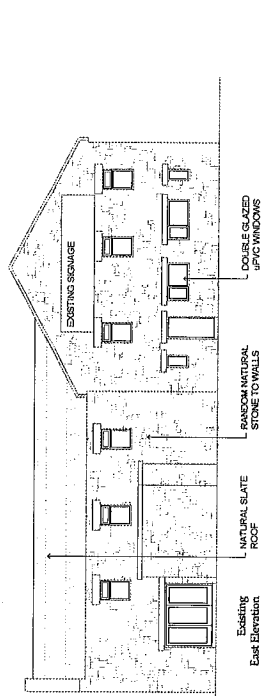
PROPOSED SITE LAYOUT  
 Scale 1:250

The contractor is to check and verify all building and civil engineering levels and sewer invert levels at contractor participation commencing work. This drawing is to be read with and checked against structural and specialist drawings provided for the work.

The contractor is to comply in all respects with the current Building Regulations and all other applicable legislation and standards.

The drawings and the building works described are the responsibility of Currie and Currie LLP and may not be reproduced except by permission.

⊗ DOWNLIGHTER POSITIONS



REV B - 15.04.2016 - MICRO BREWERY ELEVATIONS REVERSED  
REV A - 17.02.2016 - WINDOWS TO NEW STONE OMITTED  
REASON: N/A

CLIENT:  
TWICE BREWED LLP

PROJECT:  
PROPOSED MICRO BREWERY AND RECEPTION AREA AT:  
TWICE BREWED PUBLIC HOUSE  
MILITARY ROAD  
NORTHUMBERLAND  
NE47 7AN

DRAWING TITLE:  
ELEVATIONS  
DRAWING STATUS:  
PLANNING

currie + currie  
architecture

Beaufort Park, Aulick Road  
Hexham, NE48 4TU  
Tel: 01434 626270 Email: info@currieandcurrie.com

Client Ref	CC/16/TWBDB/1002
Drawn By	DC
Checked By	DC
Date	15.04.2016
Issue	1
Rev	0

TWICE BREWED INN, MILITARY ROAD.  
16NPG103, CONDITIONS 4 & 7

Northumberland National Park  
Authority  
Planning Department  
Received  
16 JAN 2017

