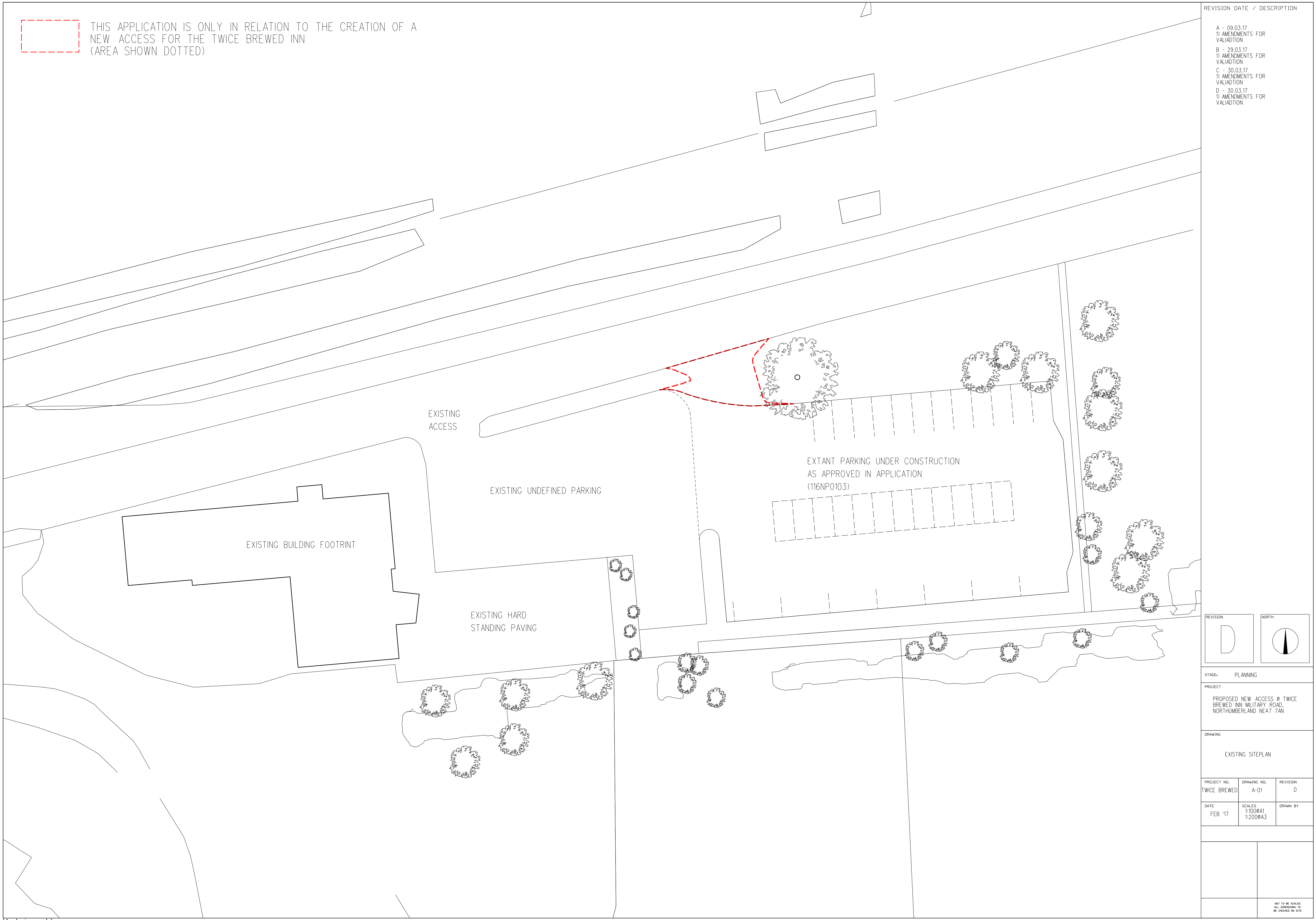


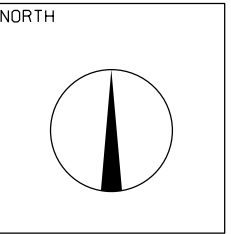
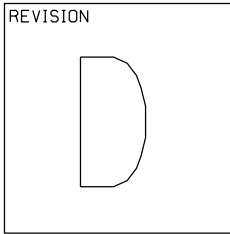


THIS APPLICATION IS ONLY IN RELATION TO THE CREATION OF A
NEW ACCESS FOR THE TWICE BREWED INN
(AREA SHOWN DOTTED)



REVISION DATE / DESCRIPTION

- A - 09.03.17
1) AMENDMENTS FOR
VALIADTION
- B - 29.03.17
1) AMENDMENTS FOR
VALIADTION
- C - 30.03.17
1) AMENDMENTS FOR
VALIADTION
- D - 30.03.17
1) AMENDMENTS FOR
VALIADTION



STAGE: PLANNING

PROJECT
PROPOSED NEW ACCESS @ TWICE
BREWED INN, MILITARY ROAD,
NORTHUMBERLAND NE47 7AN

DRAWING
EXISTING SITEPLAN

PROJECT NDL TWICE BREWED	DRAWING NDL A-01	REVISION D
DATE FEB '17	SCALES 1:1000A1 1:2000A3	DRAWN BY

	NOT TO BE SCALED ALL DIMENSIONS TO BE CHECKED ON SITE