



Home Office

Emergency Services Mobile Communications Programme **Supporting Technical Information**

for **EAS0532** : -

Herdlaw Farm

Planned LTE 800

Prepared by: Julian Williams BEng (Hons), MIET

Date: 6th February 2018



HM Government



CFOA
Chief Fire Officers
Association



ASSOCIATION OF
AMBULANCE
CHIEF EXECUTIVES



Home Office

Map of Area



HM Government



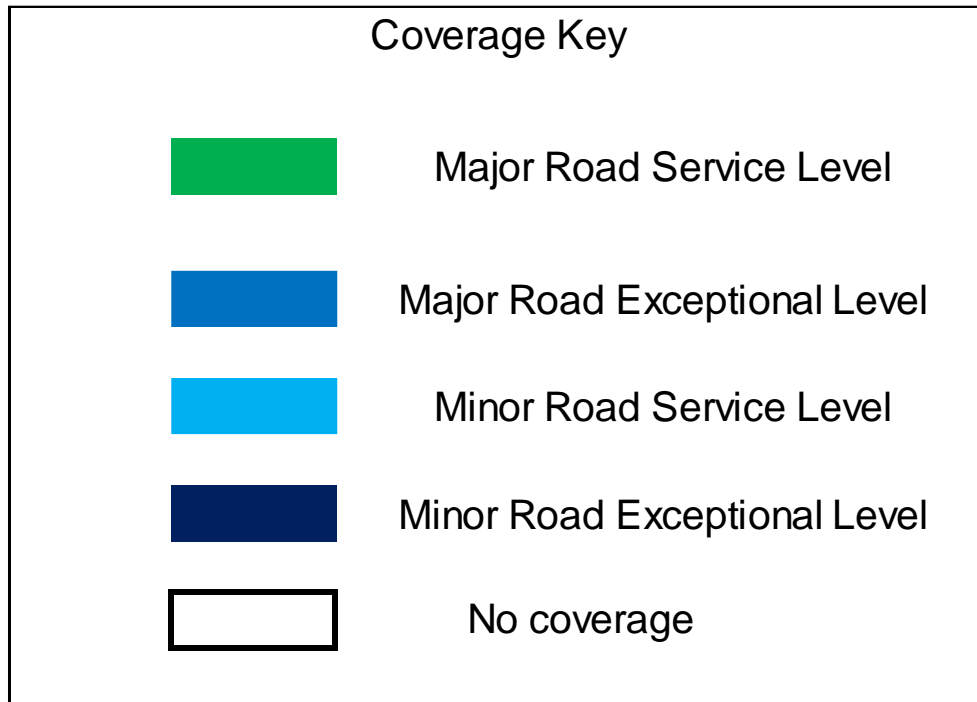
CFOA
Chief Fire Officers
Association



ASSOCIATION OF
AMBULANCE
CHIEF EXECUTIVES



This site provides coverage to the Major Road B6341 that links Hepple and Billsmoor Park with Elsdon. Additionally all the Minor Roads (as defined by ESN) in the area provided with coverage.



Major Road Service Level: - Required continuous signal level along a major road.

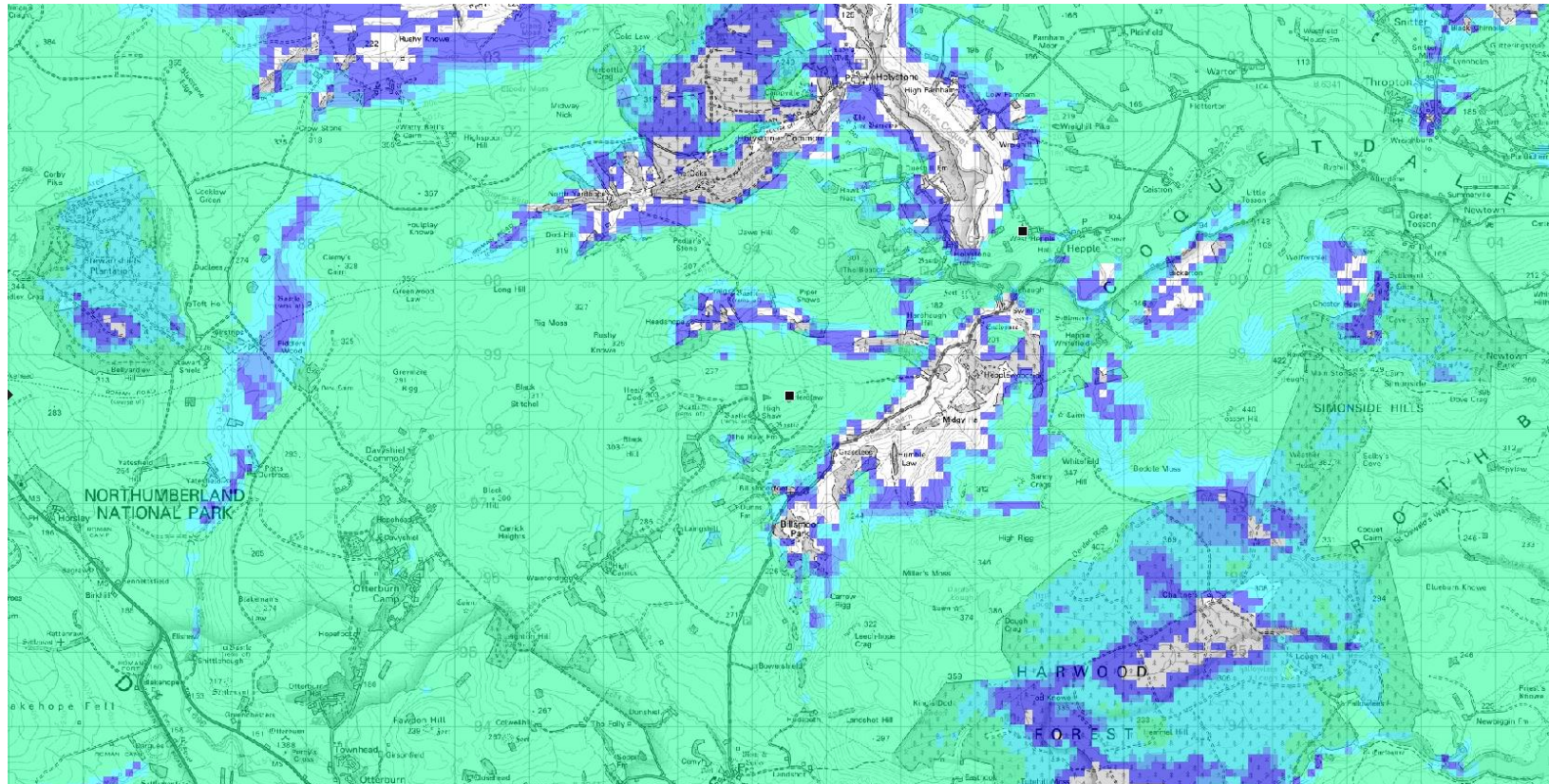
Major Road Exception Level – Allowable lower signal level for a short distance on a major road.

Minor Road Service Level: - Required continuous signal level along a minor road.

Minor Road Exception Level – Allowable lower signal level for a short distance on a minor road.



EAS0532 – Existing L800 ESMCN coverage including proposed EE ESN coverage

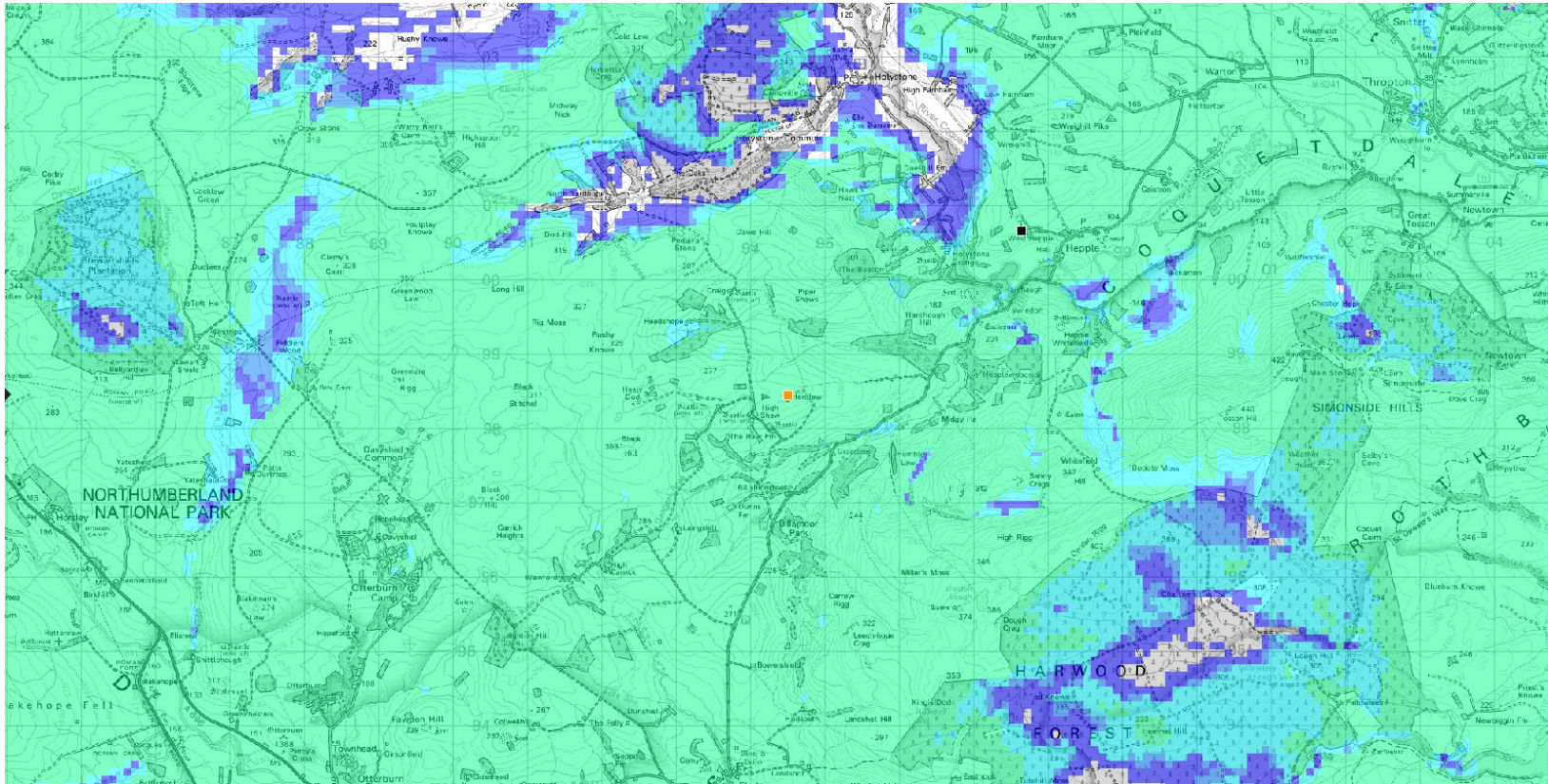


Note: This is predicted coverage using radio coverage planning software



Home Office

EAS0532 – Predicted L800 ESMCN coverage with new proposed site with antennas at 10m including EE ESN proposed coverage

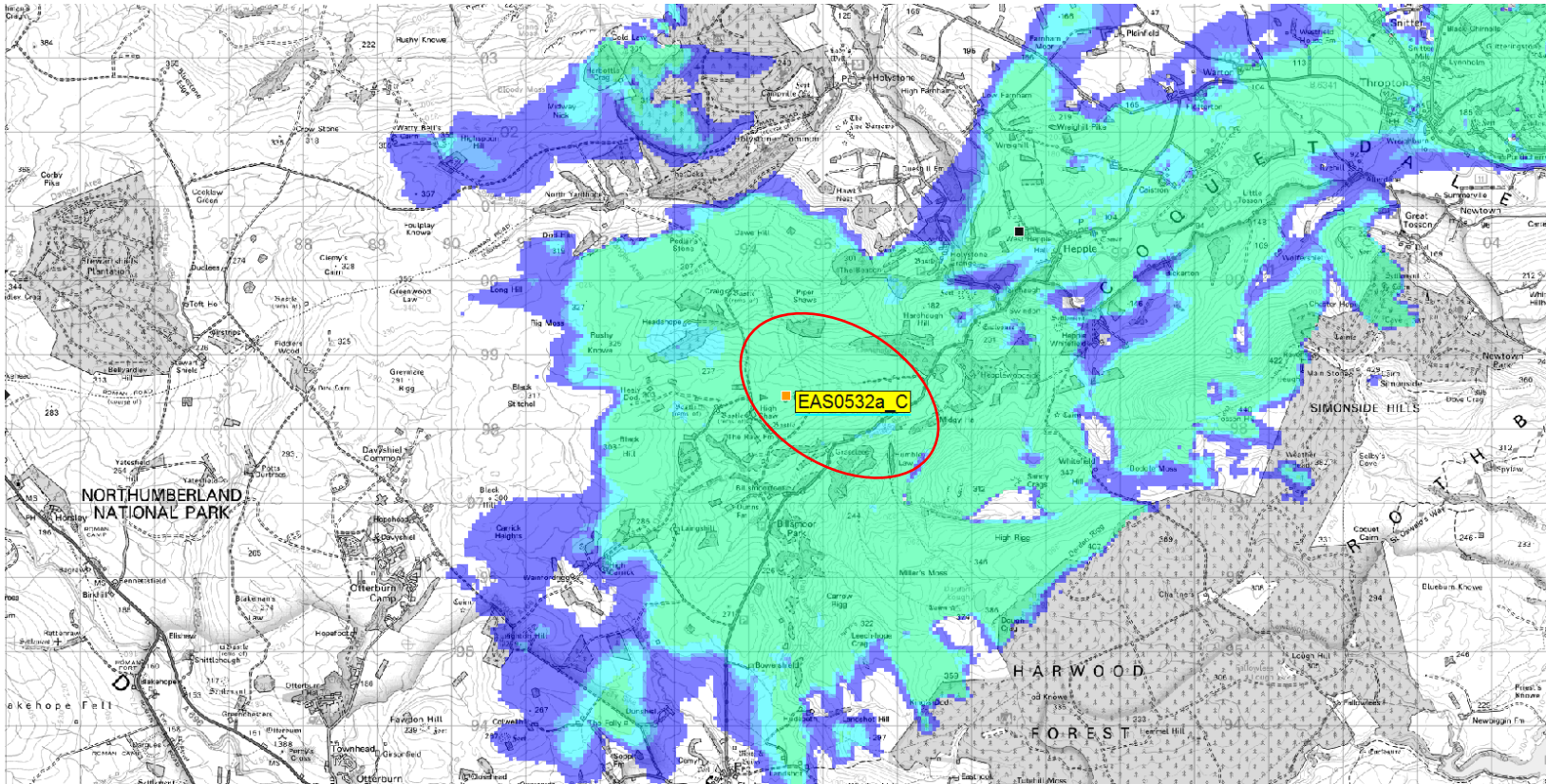


Note: This is predicted coverage using radio coverage planning software



Home Office

EAS0532 – Predicted L800 ESMCN coverage from new proposed site with antennas at 10m



Note: This is predicted coverage using radio coverage planning software