



Home Office

# Emergency Services Mobile Communications Programme **Supporting Technical Information**

for **EAS0103** :-

**Bell Hill**

Planned LTE 800

Prepared by: Julian Williams BEng (Hons), MIET

Date: 5<sup>th</sup> February 2018



HM Government



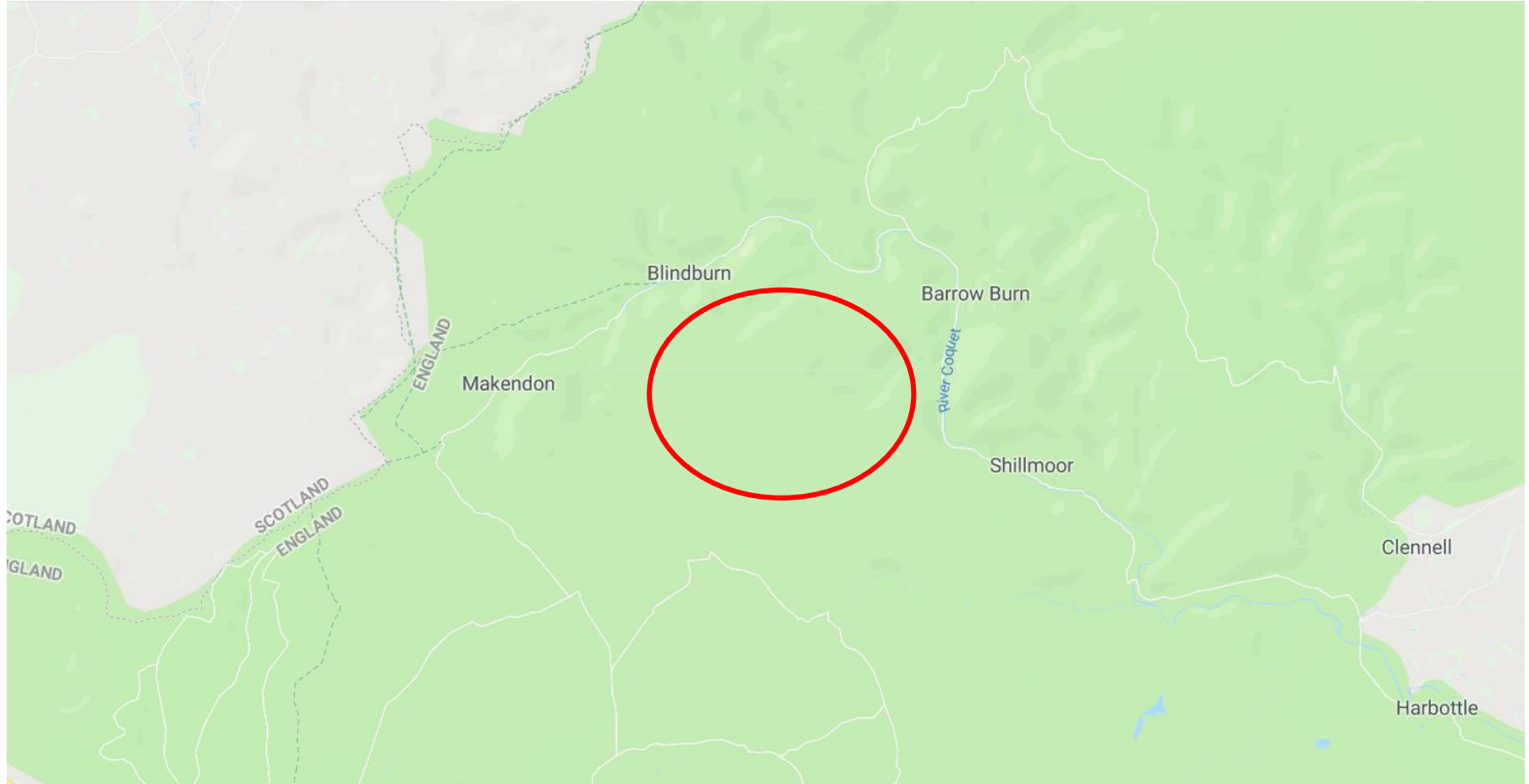
CFOA  
Chief Fire Officers  
Association



ASSOCIATION OF  
**AMBULANCE**  
CHIEF EXECUTIVES



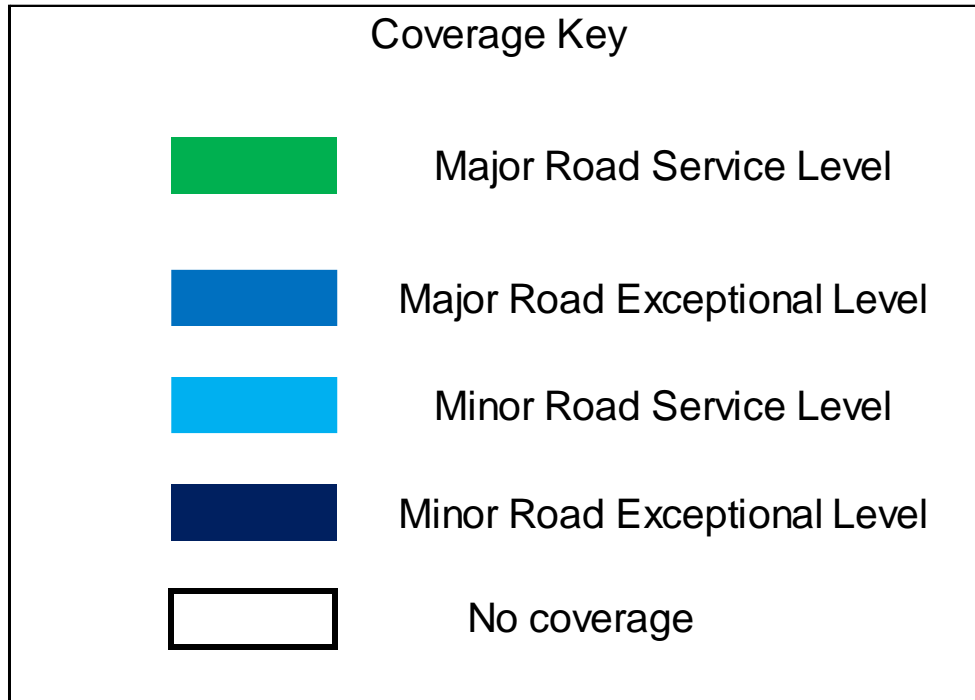
# Map of Area





This site provides coverage to the Minor Roads (as defined by ESN) that connects the farm settlements of Fulhope, Blindburn, Carlcroft, Carshope with Alwinton. The area is predominantly a Ministry of Defence Training Area (labelled as Danger Area on an OS Map), for Live Firing of Small Arms and Artillery. This is used by both the British Military and joint training exercises for other NATO Countries. This site ensures all the Emergency Rendezvous (RV) Points in the Danger Area are provided with coverage.

The adjacent hills, (not located in the Danger Area) has many footpaths and are used by Ramblers/Hill Walkers and hence Mountain/Moors Rescue will benefit from the coverage provided by this site.



Major Road Service Level: - Required continuous signal level along a major road.

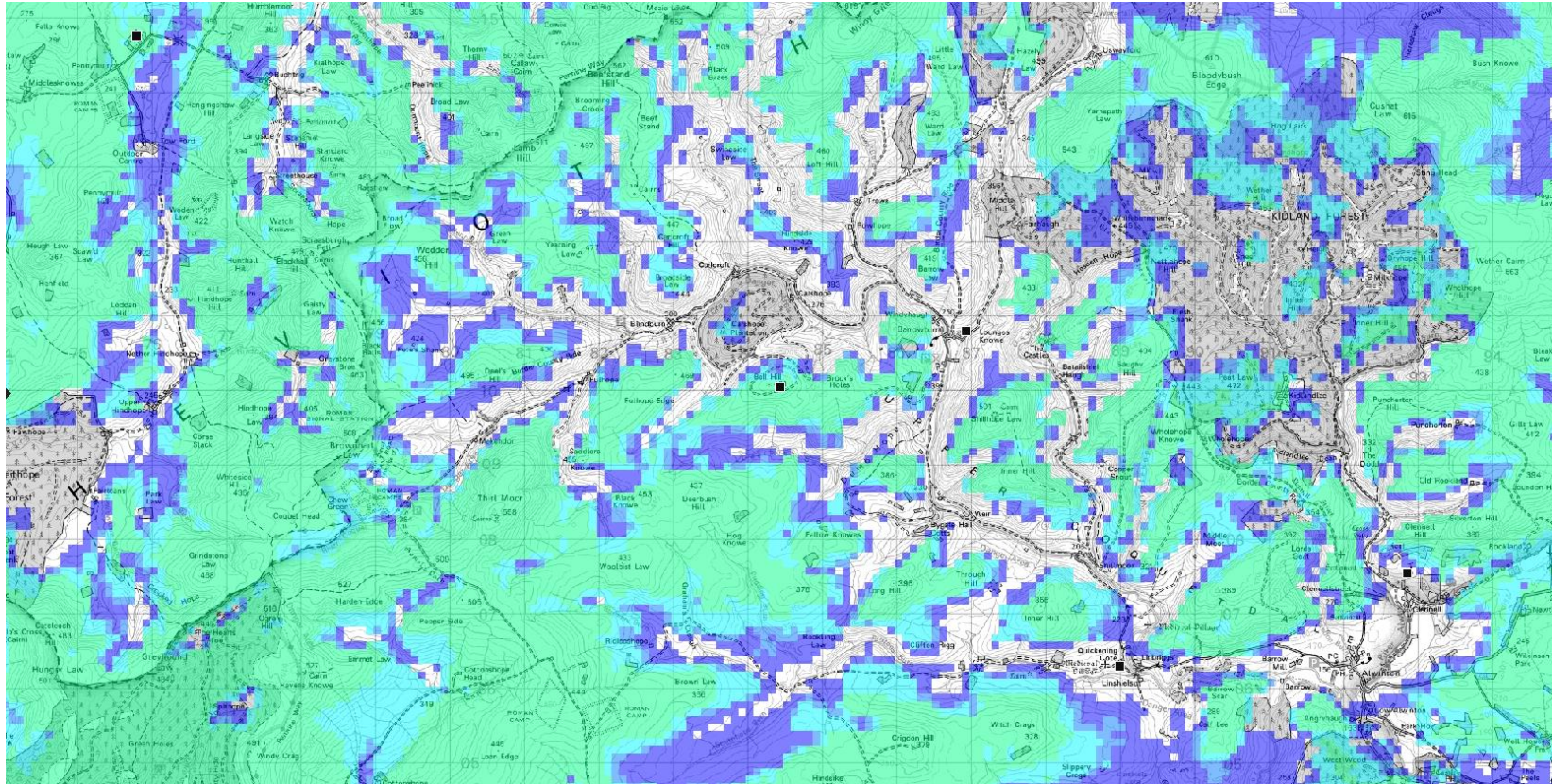
Major Road Exceptional Level – Allowable lower signal level for a short distance on a major road.

Minor Road Service Level: - Required continuous signal level along a minor road.

Minor Road Exceptional Level – Allowable lower signal level for a short distance on a minor road.



**EAS0103** – Existing L800 ESMCN coverage including proposed EE ESN coverage.

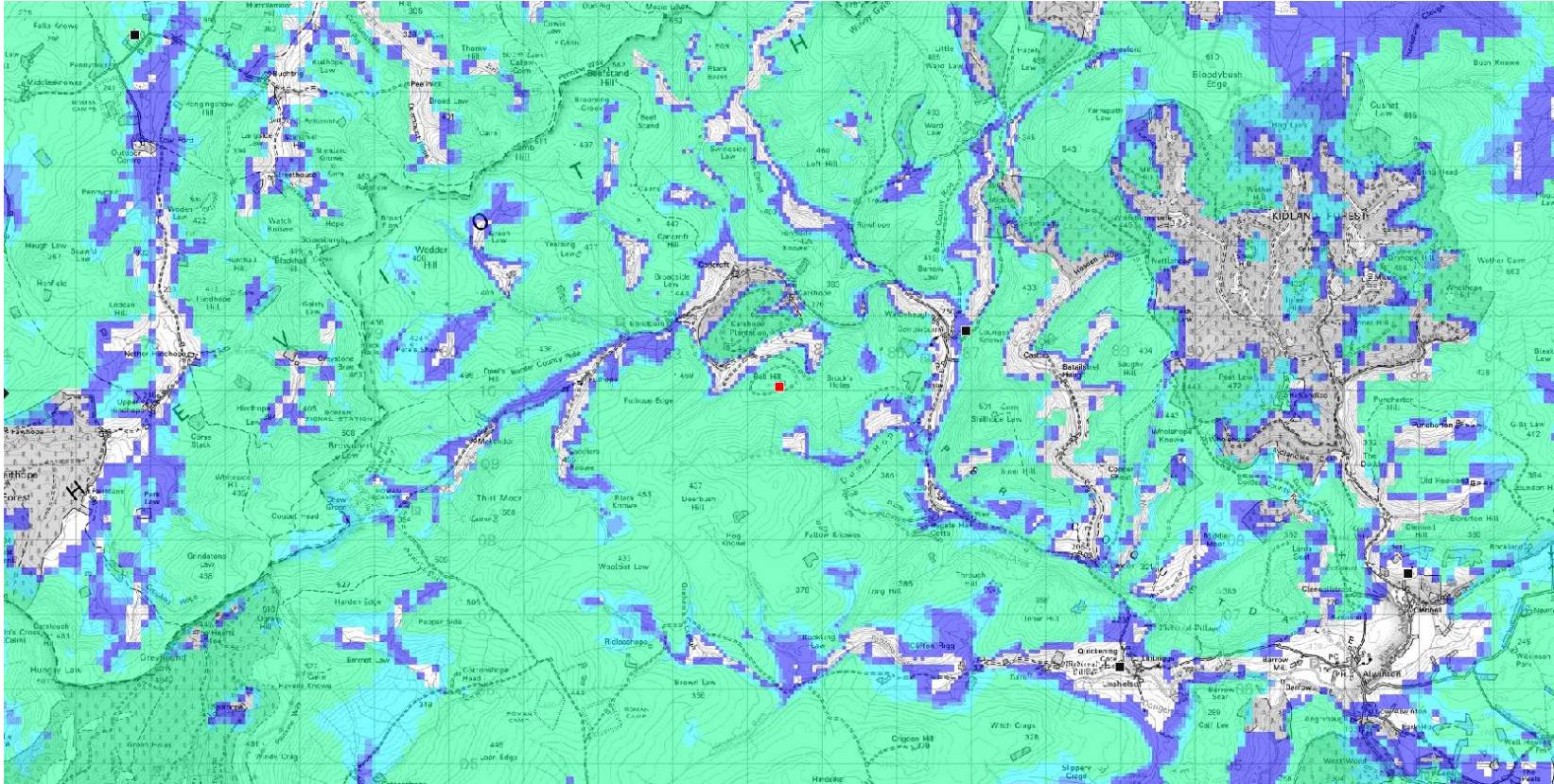


Note: This is predicted coverage using radio coverage planning software



# Home Office

**EAS0103** – Predicted L800 ESMCN coverage with new proposed site with antennas at 20m including EE ESN proposed coverage.



Note: This is predicted coverage using radio coverage planning software



CFOA  
Chief Fire Officers  
Association

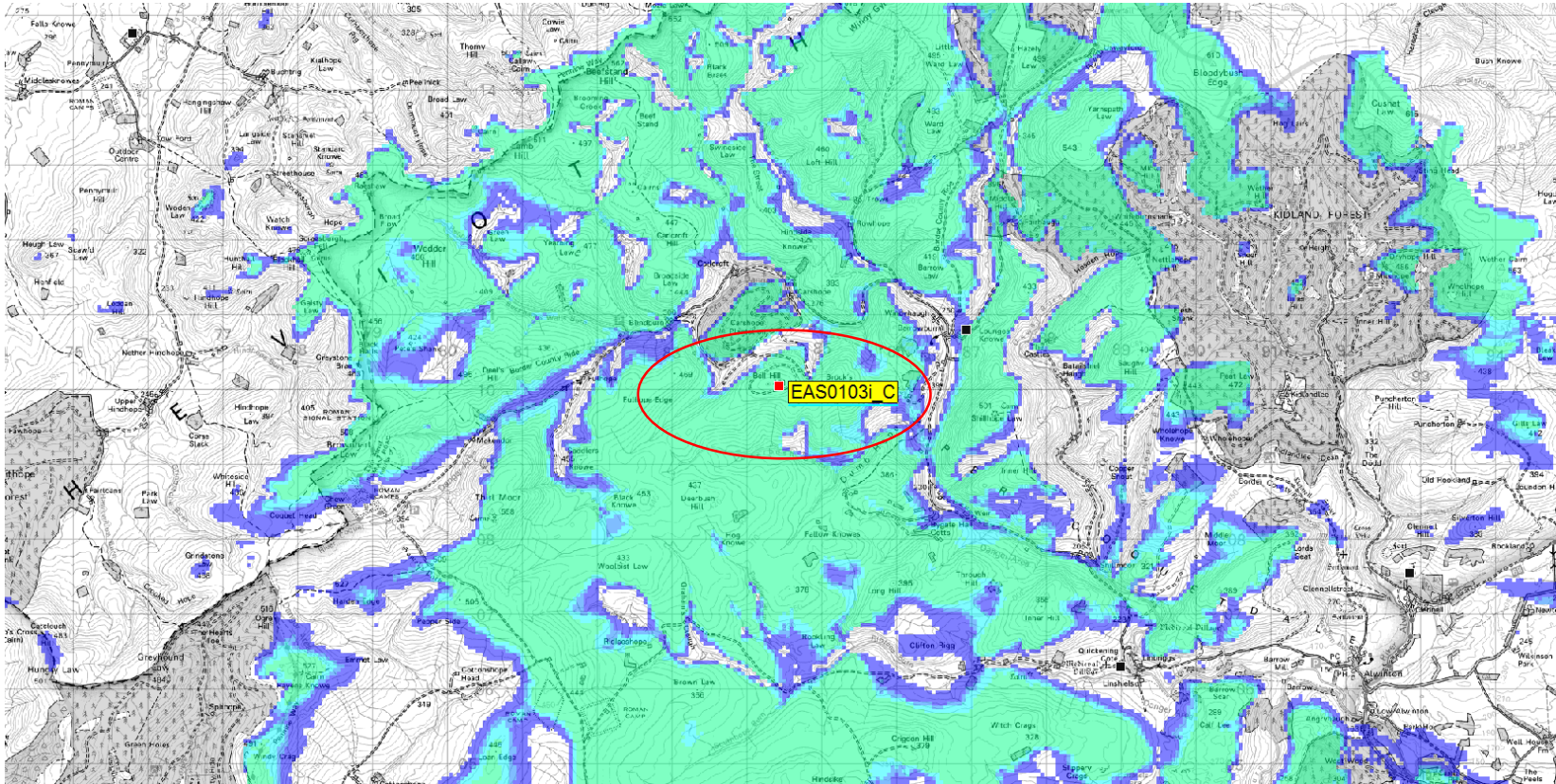


ASSOCIATION OF  
AMBULANCE  
CHIEF EXECUTIVES



# Home Office

**EAS0103** – Predicted L800 ESMTN coverage from new proposed site with antennas at 20m.



Note: This is predicted coverage using radio coverage planning software



CFOA  
Chief Fire Officers  
Association



ASSOCIATION OF  
AMBULANCE  
CHIEF EXECUTIVES