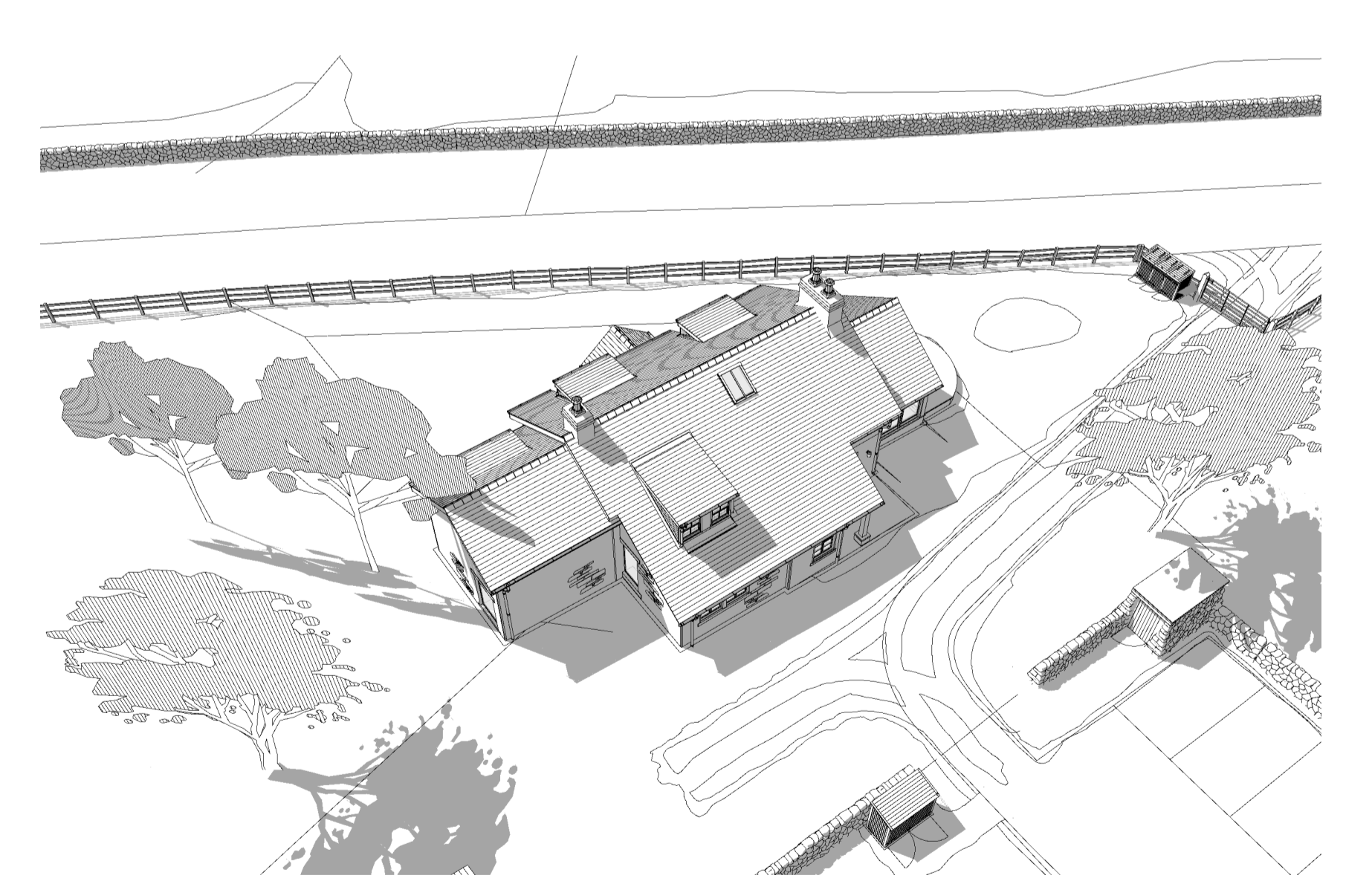
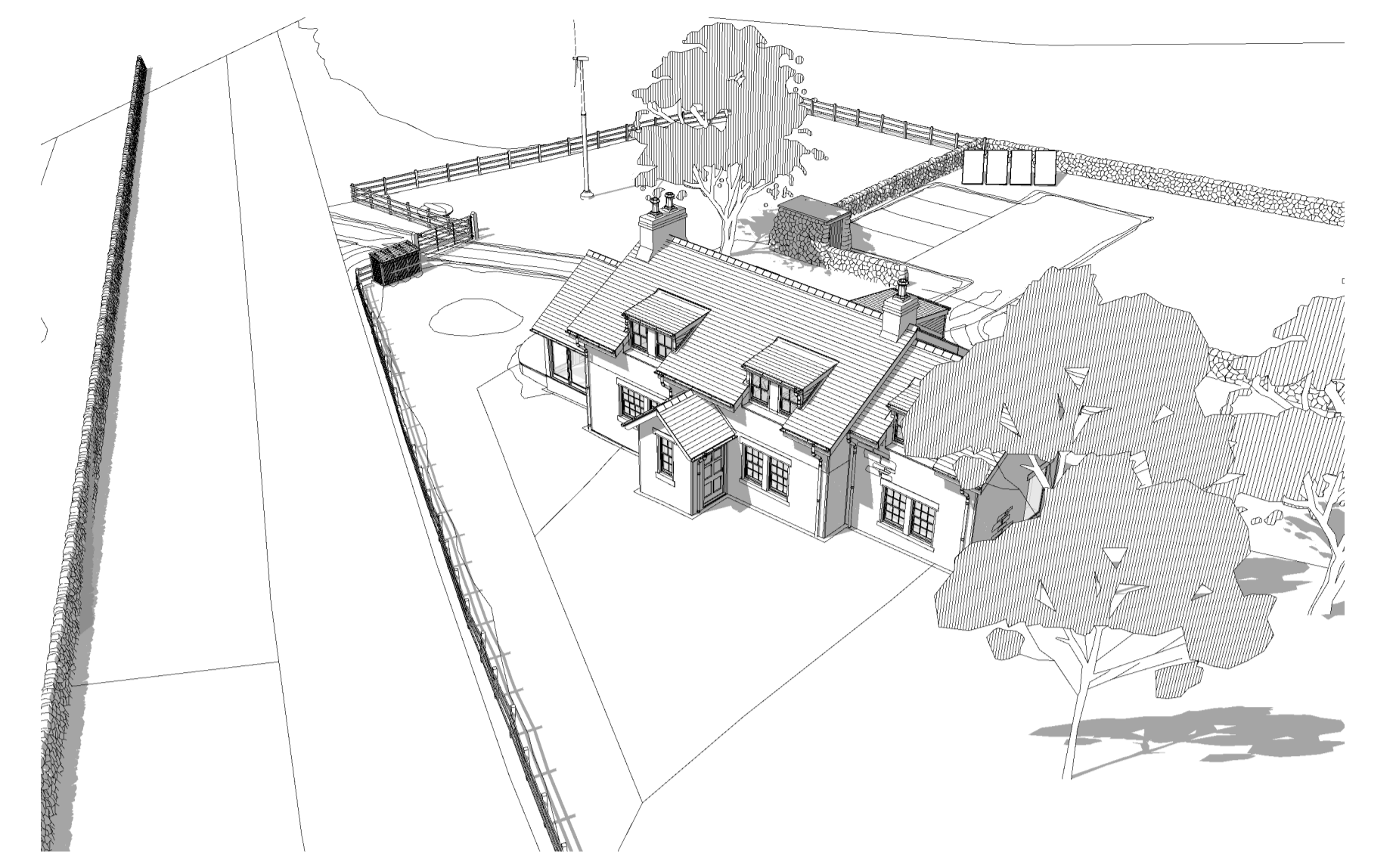
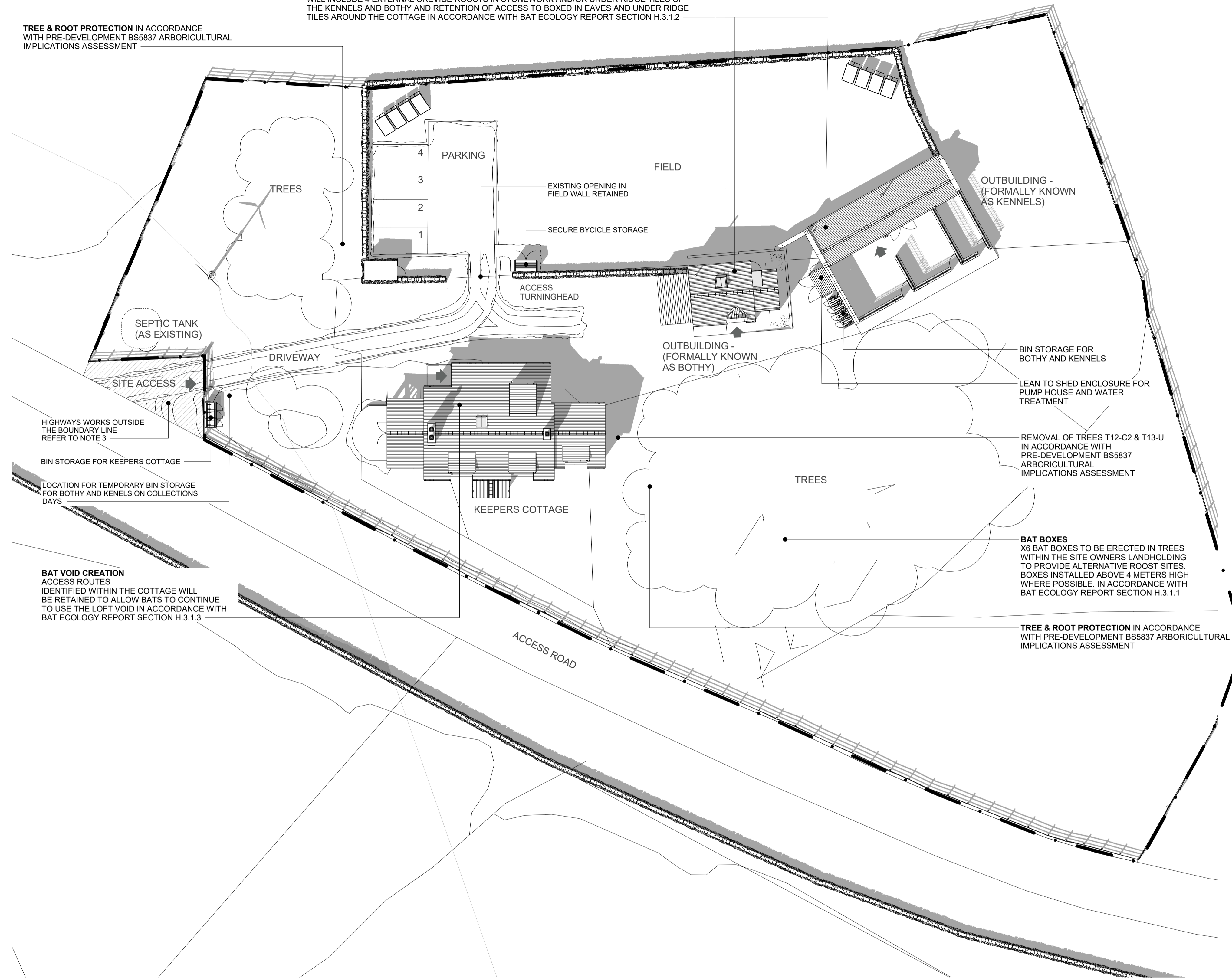
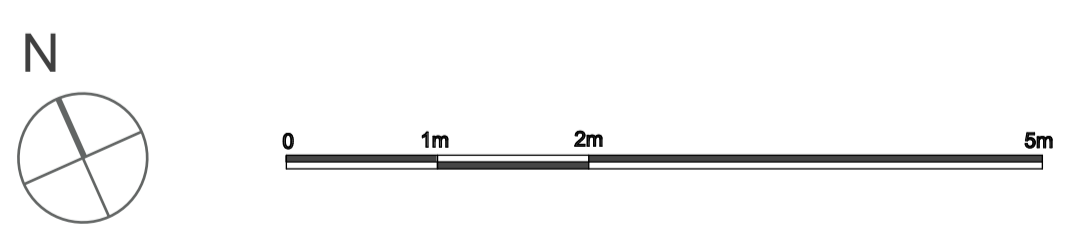


**BATS - CREVICE ROOST SITES**  
 POTENTIAL ROOSTING OPPORTUNITIES WILL BE INCORPORATED INTO THE DEVELOPMENT WHICH WILL INCLUDE 4 EXTERNAL CREVICE ROOSTS IN STONEMASONRY AND/OR UNDER RIDGE TILES OF THE KENNELS AND BOTHY AND RETENTION OF ACCESS TO BOXED IN EAVES AND UNDER RIDGE TILES AROUND THE COTTAGE IN ACCORDANCE WITH BAT ECOLOGY REPORT SECTION H.3.1.2

**TREE & ROOT PROTECTION** IN ACCORDANCE WITH PRE-DEVELOPMENT BS5837 ARBORICULTURAL IMPLICATIONS ASSESSMENT



**1 PROPOSED SITE PLAN**  
 03 SCALE - 1:200



- NOTES**
- TREE PROTECTION** - IN STRICT ACCORDANCE WITH PRE-DEVELOPMENT BS5837 ARBORICULTURAL IMPLICATIONS ASSESSMENT AND TREE PROTECTION PLAN.
  - TREE REMOVAL** OF TWO TREES, T12-C2 WITH LOW RETENTION VALUE & T13-U WITH UNSUITABLE RETENTION VALUE. REMOVAL OF THESE TWO TREES TO ALLOW FOR EXTENSION TO COTTAGE

- NOTES**
- SITE VEHICULAR ACCESS**  
 IN ACCORDANCE WITH HIGHWAYS RECOMMENDATIONS THE VEHICULAR ACCESS WILL REQUIRE RECONSTRUCTION TO ACCORD WITH AN NCC TYPE 'A' (LIGHT VEHICLE USE) CONSTRUCTION SPECIFICATION WITH HARD SURFACING UP TO 6.0M FROM THE EDGE OF CARRIAGEWAY, WITH NO LOOSE OR UNBOUND MATERIALS PERMITTED WITHIN THIS AREA TO ENCOMPASS THE FULL TURNING / CROSSING POINT INTO THE SITE WITH ANY GATES TO BE SET BACK AT 6.0M FROM THE EDGE OF THE CARRIAGEWAY.  
  
 THESE WORKS WILL BE SUBJECT TO A SECTION 184 AGREEMENT PURSUANT TO THE HIGHWAYS ACT 1980. AGREEMENT TO BE OBTAINED PRIOR TO VEHICULAR ACCESS WORKS COMMENCING.

REV D - 22.06.2020 - PLANNING ISSUE

**5 EDGE** ARCHITECTURAL SERVICES  
 www.5edge.co.uk

STATUS: **PLANNING**

REVISION: **D**