

EXISTING 3No. ANTENNAS MOUNTED ON
OFFSET POLES AT TOWER LEG
EXISTING 3No. MHAs MOUNTED BEHIND
ANTENNAS AT TOWER LEG
EXISTING 1No. (D2) Ø600mm DISH ON STAND-OFF
BRACKETS FIXED TO TOWER LEGS
EXISTING 1No. (D1) Ø600mm DISH ON STAND-OFF
BRACKETS FIXED TO TOWER LEGS

C/L OF ANTENNAS 20.0m AGL TOP OF TOWER 20.0m AGL
▼
C/L DISHES 17.9m AGL
▼

SATELLITE BACKHAUL DISH ON SUPPORT POLE
FIXED TO TOWER BASE
450mm WIDE CABLE LADDER AT HIGH LEVEL ON 2No.
SUPPORT POLES FIXED TO TOWER BASE

20m HIGH HEAVY DUTY LATTICE TOWER ON
6700x6700x1000mm* REINFORCED CONCRETE BASE
UNISTRUT FOR VSAT CABLE MANAGEMENT TO BE FIXED AT
HIGH LEVEL ON BETWEEN VSAT SUPPORT POLE & TOWER LEG

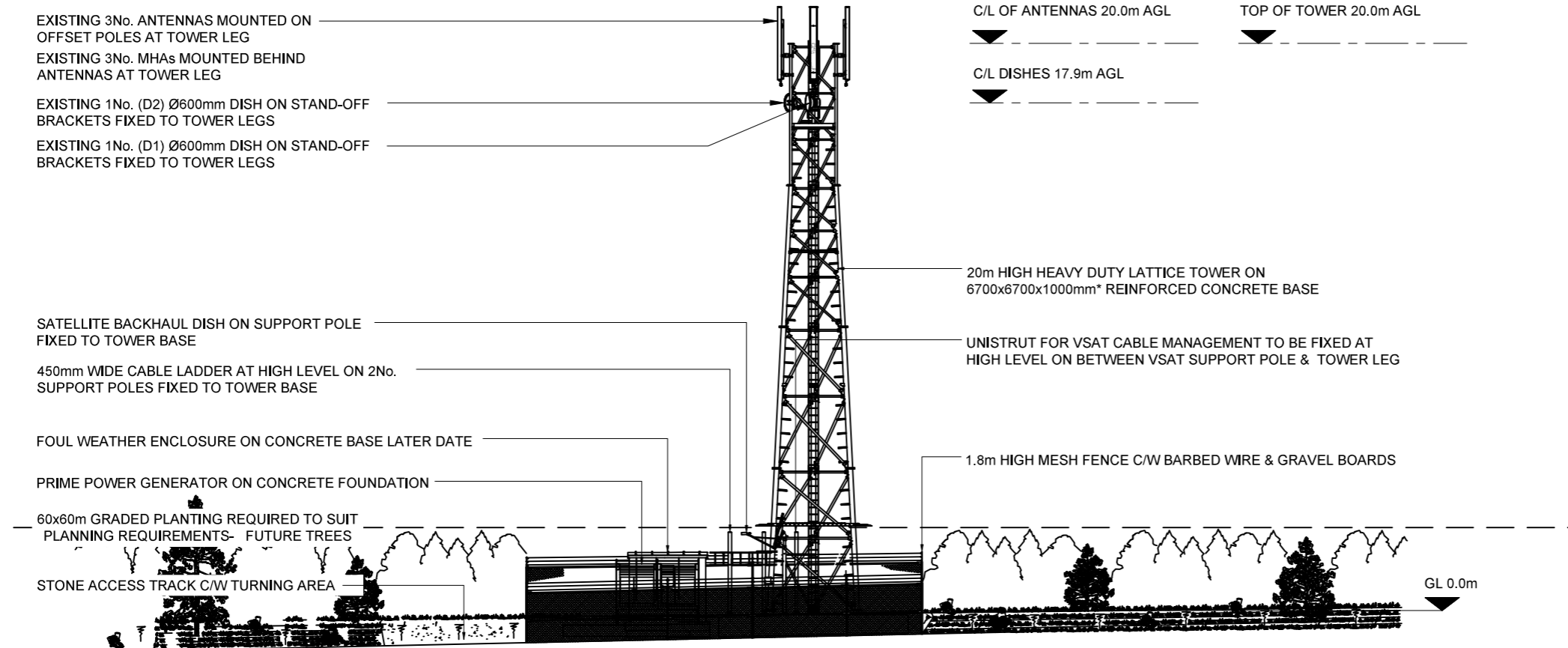
FOUL WEATHER ENCLOSURE ON CONCRETE BASE LATER DATE
PRIME POWER GENERATOR ON CONCRETE FOUNDATION

1.8m HIGH MESH FENCE C/W BARBED WIRE & GRAVEL BOARDS

60x60m GRADED PLANTING REQUIRED TO SUIT
PLANNING REQUIREMENTS- FUTURE TREES

STONE ACCESS TRACK C/W TURNING AREA

GL 0.0m



PROJ No			
PROJ No			
PROJ No			
B	PROJ No EAS01031 METER CABINET DUCTING	22/04/24	EL ELR
A	PROJ No EAS01031 PLANNING	02/04/24	RS HS



SITE No: EAS01031/SRN0103

EE CELL ID: 78712

SITE NAME:
BELL HILL

SITE ADDRESS:
OFF UNCLASSIFIED ROAD
BLINDBURN,
NORTHUMBERLAND
NE65 7DD

PROJECT:
HOME OFFICE SRN

TITLE
EXISTING SITE ELEVATION
GENERAL ARRANGEMENT

SCALE 1:200

DRAWN	RS	02/04/24
APPROVED	HS	02/04/24

DRG No.	Sheet 1 of 1	Rev
EAS01031 -300-TEL		B