

19HSF (GA) 22 Proposed South Elevation

Hardwood panel door
finished in RAL 7016

Aluminium framed double glazed
windows finished in RAL 7016
(Anthracite Grey). Frames
set back min 75mm from face of stone

Aluminium framed double doors
finished in RAL 7016
(Anthracite Grey). Frames
set back min 75mm from face of stone

Stainless steel flues
to log burners

Proposed Solar Panels to
match existing panels



19HSF (GA) 21 Proposed East Elevation



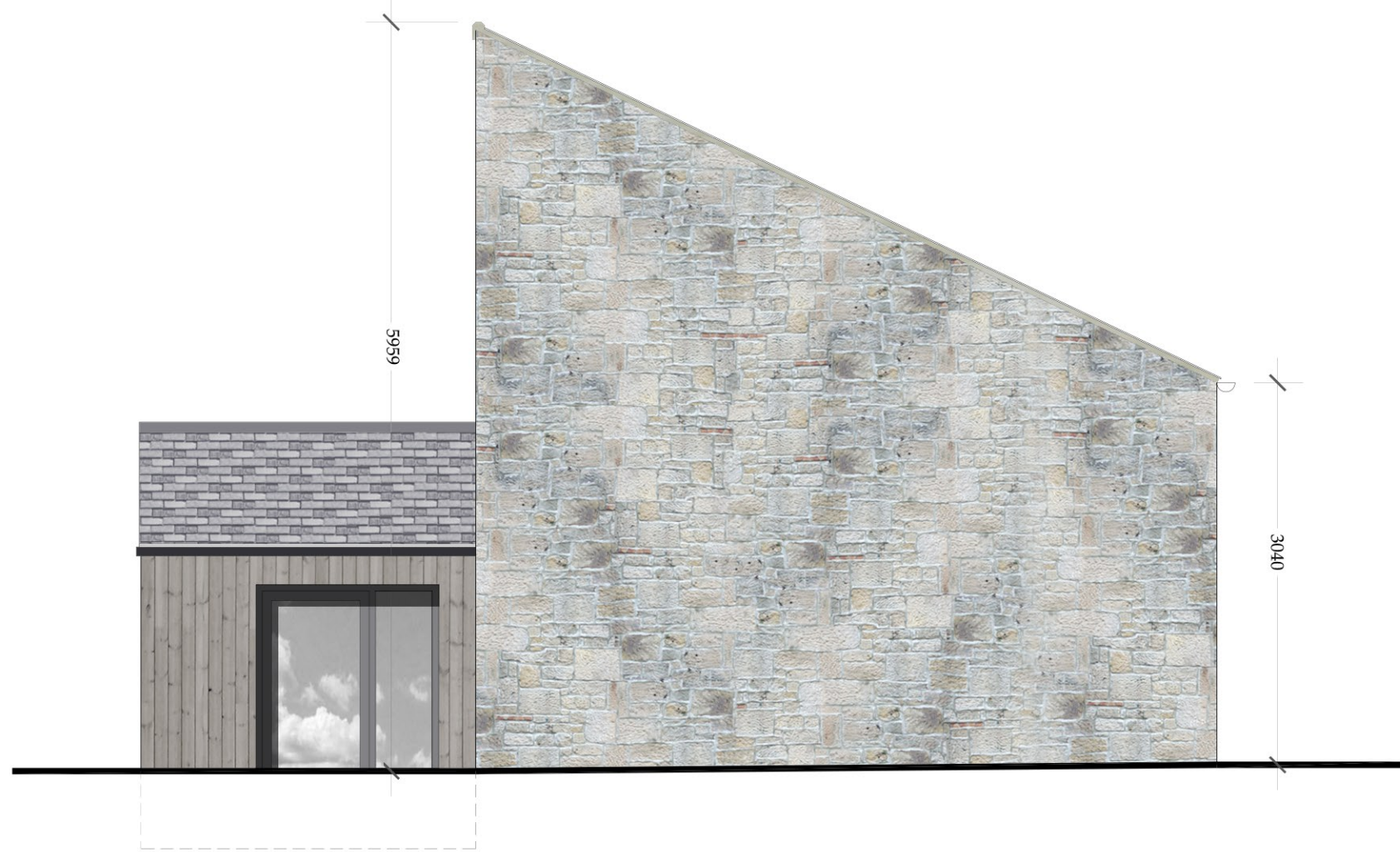
19HSF (GA) 23 Proposed North Elevation

Velux roof light
over ensuite

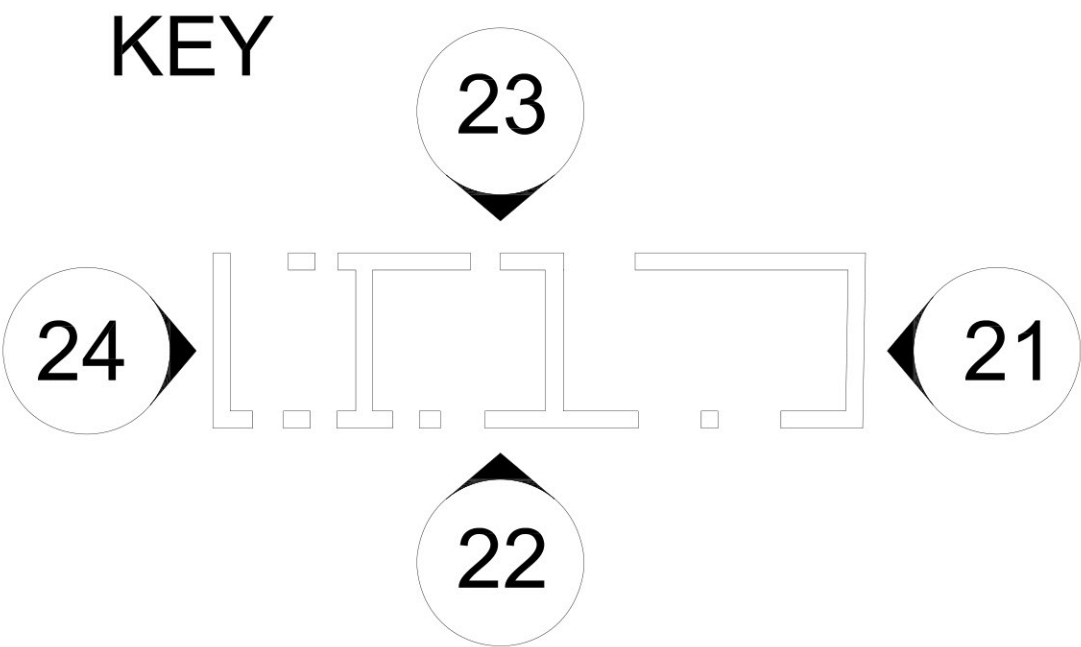
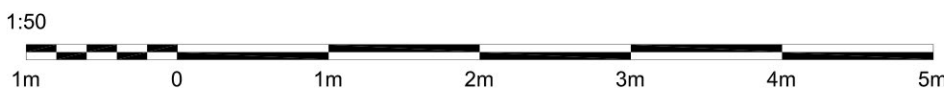
Timber frame off-shot finished in
vertical clad Larch, stained grey
on completion

Aluminium framed double glazed
windows finished in RAL 7016
(Anthracite Grey). Frames
set back min 75mm from face of stone

Hardwood panel door set
finished in RAL 7016



19HSF (GA) 24 West Elevation



Revision	Description	Date

Please do not scale from this drawing.
Any errors, omissions and discrepancies are to be reported to Insight Architectural Design (IAD) Ltd prior to use. The contractor must check and verify the dimensions of the whole site and building, including levels, sewer inverts and window openings prior to commencing work. This drawing is to be read with and checked against any specialist drawings, including those of the Structural Engineer prior to works commencing. The contractor must work in strict compliance with all British Standards, Building Regulations, Acts of Parliament and European Legislation. This drawing and the work shown are the copyright of IAD Ltd and cannot be copied without consent.

Drawing Status	Approval
Proposed Change Of Use High Skeloe Farm Falsbore	
Proposed Elevations	
Scale: 1:50 @ A1 Date: May'19	
Drawn: MB	Auth:
19HSF (GA) 21-24	