

NORTH

KEY:

- Asphalt (See Patrick Parsons detail).
- Tar spray & chippings for vehicle access road (colour T1), See Patrick Parsons detail, colour to be honey / pink tones.
- Tar spray & chippings for car parking bays, See Patrick Parsons detail, colours: T1 = honey/pink, T2 = light grey tones.
- Tar spray & chippings for pedestrian access, See Patrick Parsons detail, colours: T1 = honey/pink, T2 = light grey tones.
- Lafarge Tarmac 'Ulticolour', Buff Quartzite, pedestrian access (See Patrick Parsons detail).
- Lafarge Tarmac 'Ulticolour', clear - natural - vehicular access (See Patrick Parsons detail).
- Natural sandstone flags (See Patrick Parsons detail).
- Reclaimed stone flags (See Patrick Parsons detail).
- Whinstone setts (See Patrick Parsons detail).
- Loose gravel over compacted sub-base, pedestrian access (See Patrick Parsons detail).
- Loose gravel over compacted sub-base, vehicular access (See Patrick Parsons detail).
- Compacted whinstone footpath (See Patrick Parsons detail).
- Reinforced turf [plastic grid - vehicular & pedestrian] (See Patrick Parsons detail).
- Reinforced whinstone [plastic grid] (See Patrick Parsons detail).
- Reinforced gravel for car parking bays [plastic grid] (See Patrick Parsons detail).
- Reinforced whinstone for delivery area. [heavy duty plastic grid] / Reinforced gravel for coach parking (See Patrick Parsons detail).

NOTES:

- Where 'no dig' road or footpath construction is required within tree root protection areas, Cellweb is to be used to the appropriate depth as a foundation to the specified surface finish (see SIL-GK-00-ZZ-DR-L-8415).
- Play spaces (YHA garden and between car parks) to have bark chippings or grass mat as primary safety surface (see dwg. SIL-PP-00-ZZ-DR-C-280).

Edging materials: (see dwgs. SIL-GK-00-ZZ-DR-L-8405 & 8506)

- ● Proposed position of 6No lighting bollards

Rev.	Date	Description
P01	07-05-15	Initial draft
P02	21-05-15	Differentiation made between vehicular and pedestrian surfacing types.
P03	27-05-15	Annotation added re 'no dig' construction.
P04	29-06-15	Colours to hard surfacing added to key, area of whinstone surface to cycle store changed to natural stone, minor layout change.

Client
NNPA / YHA

Project
The Sill, Once Brewed, Northumberland

Title
Hard surfacing - North Additiona Lighting

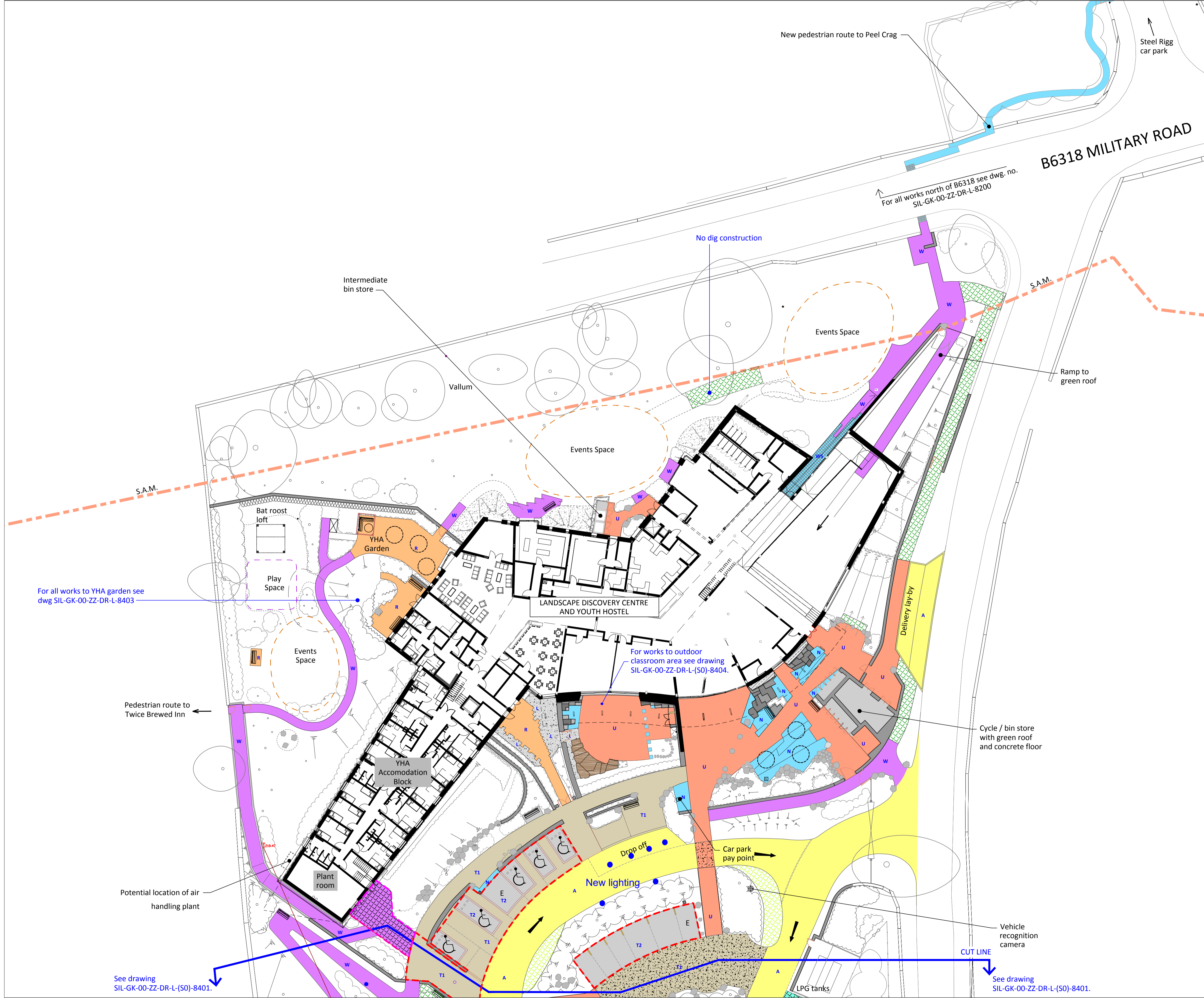
Drawn	Checked	Date	Scale@A1
PB/QV	PB	05/15 12/20	1:250
Drawing No.	Status	Revision	
SIL-GK-00-ZZ-DR-L-8400	S0	P04	

GLENKEMP

LANDSCAPE EIA ■ PLANNING ECOLOGY

Design Works, William Street, Felling on Tyne, NE10 0JP
Telephone: 0191 495 2495 Fax: 0191 469 2668
E mail: planconsult@glenkemp.co.uk

GK file ref.



For all works to YHA garden see dwg SIL-GK-00-ZZ-DR-L-8403

For works to outdoor classroom area see drawing SIL-GK-00-ZZ-DR-L-(S0)-8404.

For all works north of B6318 see dwg. no. SIL-GK-00-ZZ-DR-L-8200

No dig construction

Pedestrian route to Twice Brewed Inn

Potential location of air handling plant

See drawing SIL-GK-00-ZZ-DR-L-(S0)-8401.

Vehicle recognition camera

See drawing SIL-GK-00-ZZ-DR-L-(S0)-8401.

CUT LINE