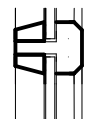
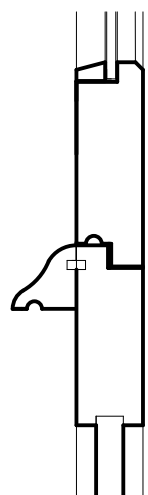


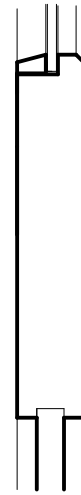
ex 125mm top and side frames with glazing beads as indicated to 6mm single glazing



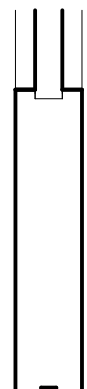
35mm x width of door transoms and mullions with glazing beads to form four equal sized panes of glass



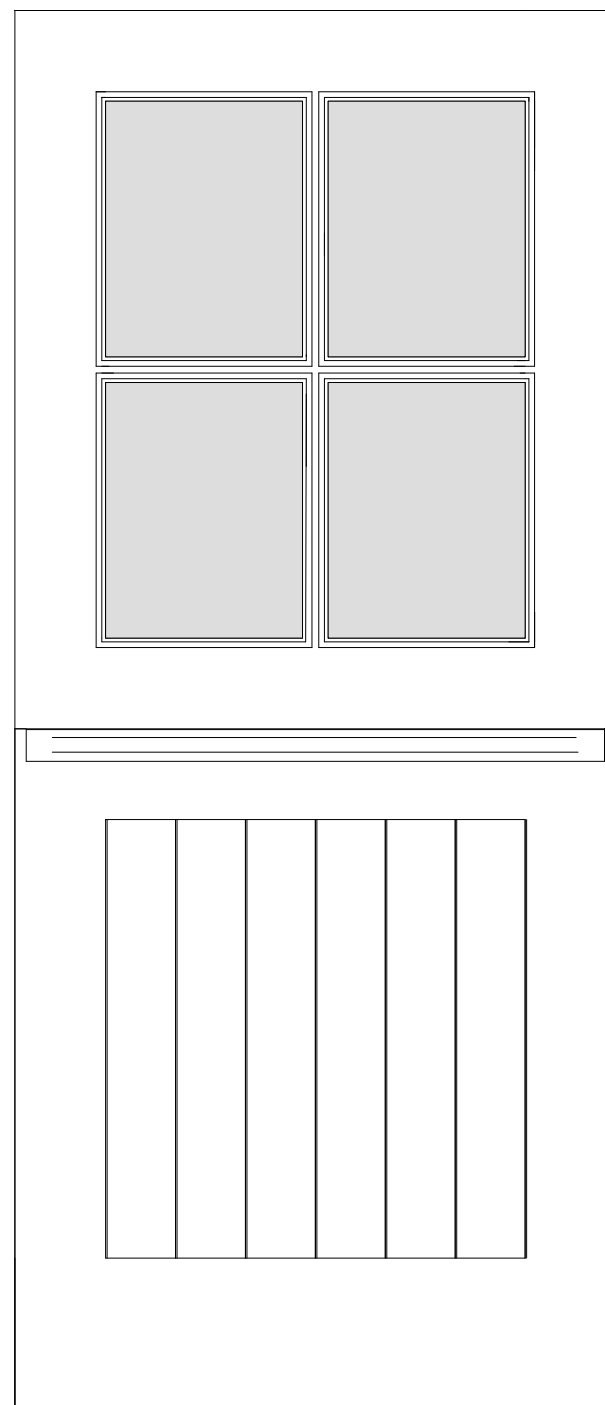
ex 125mm rails to form stable door with weatherboard to bottom half



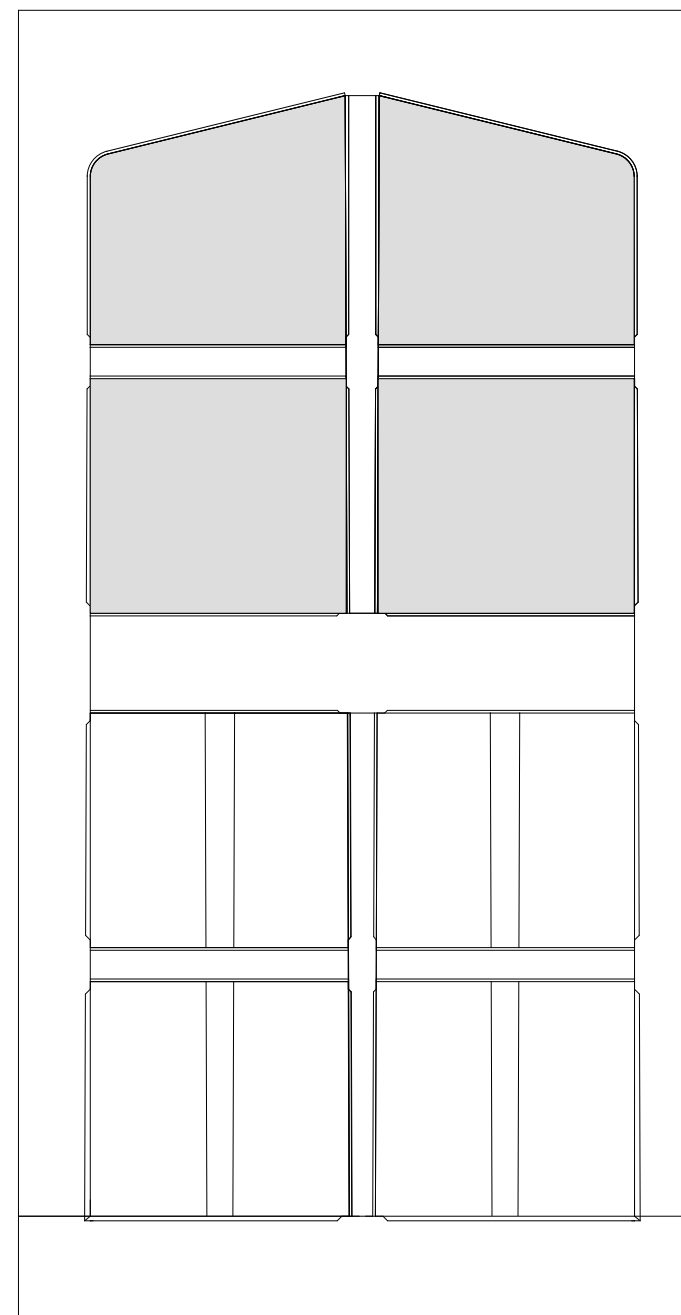
middle rail of full height door to line with stable door details



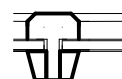
VERTICAL DETAILS



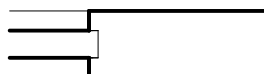
glazed stable door



internal view of existing bastle door adjusted to provide glazing in four top panels with simple glazing beads to match the new stable door



HORIZONTAL DETAILS



all doors in hardwood ready for painting

weatherproofing strips all round including to junction of top and bottom doors of stable door

doors made to fit existing frames

REVISION

A Feb '21 Alteration to glazing detail

RIDGE END FARMHOUSE
FALSTONE
NORTHUMBERLAND

PROPOSED DOOR DETAILS

Scale
1:10 and 1:5 at A3

Date
FEB 2021

TG

SPENCE & DOWER
Chartered Architects
Arch 6
Stepney Bank
Newcastle upon Tyne, NE1 2NP
Tel: (01661) 820071
architects@spenceanddower.co.uk

M648 / 207

Rev.

A

Do not scale from drawings. Indicative only.
All measurements to be reviewed on site